



Net-Log Audio Logger User Handbook



interstage

Phistersvej 31, 2900 Hellerup, Danmark
Telefon 3946 0000, fax 3946 0040
www.interstage.dk



- pro audio with a smile

SONIFEX



Revision 2.00 October 2006

©Sonifex Ltd, 2000-6

All Rights Reserved

**Sonifex Ltd, 61, Station Road, Irthlingborough,
Northants, NN9 5QE, England.**

Tel : +44 (0)1933 650 700

Fax : +44 (0)1933 650 726

Email : sales@sonifex.co.uk or technical.support@sonifex.co.uk

Web : <http://www.sonifex.co.uk>

Information in this document is subject to change without notice and does not represent a commitment on the part of Sonifex Ltd. Sonifex Ltd shall not be liable for any loss or damage whatsoever arising from the use of information or any error contained in this manual.

No part of this manual may be reproduced or transmitted in any form or by any means, electronic or mechanical, including photocopying, recording, or information storage and retrieval systems, for any purpose other than the purchaser's personal use, without the express written permission of Sonifex Ltd.

Unless otherwise noted, all names of companies, products and persons contained herein are part of a completely fictitious adaptation and are designed solely to document the use of Sonifex products.



CONTENTS

License Agreement	i
1 Definitions	i
2 Software License	i
3 Limited Warranty & Remedies	i
4 Warranty Disclaimer	ii
5 Object Code	ii
6 Limitation of Liability	iii
7 Copyright	iii
Net-Log License Form	iv
Warranty & Safety Information	v
Warranty and Liability	v
Returning the Warranty Card	vii
Reporting Software Bugs	viii
Unpacking the Net-Log	viii
Safety of Mains Operated Equipment	ix
Fuse Rating	ix
Power Cable and Connection	ix
WEEE & RoHS Directives - Sonifex Statement	x
1 Introduction	1
General Overview	1
The Net-Log	1
Net-Log Control Software	2
Recording	2
Playing	2
Archiving	3
Network	4
Required Hardware	4
2 Net-Log Hardware	5
Physical Description	5
Power	5
Level Indicators	5
Record Control/Indicator	6
Archive Alarm	6
Disk Drive Alarm	6
Reset Switch	6
Audio Inputs/Input Level Control	7
Network Status Indicators	7
Network Connections	7
RS232 Serial Ports	7
3 Set-up & Installation	9
Adjusting Record Input Levels	9
Network Topology	9
Maximum Network Connections	10
4 Startup & Login	19
Starting Net-Log-Win	19
Maximum Concurrent Users	19
Multiple Net-Logs On A Network	19
Licensing Your Net-Log	20
Obtaining License Codes	20
The Login Procedure	21
The Device List Editor	21
First Time Use of Net-Log	23

CONTENTS



CONTENTS

Changing User Details	23
General Screen Layout	24
Disconnect/Log-Off Button	24
Net-Log Selector	24
Alarm Indicators	24
Network Activity Indicators	24
Net-Log & PC Time	25
Status Bar	25
Screen Selection Buttons	25
Mentor Status Indicator	25

5 Recording 26

The Record Screen	26
Manual Recording	26
Program Recording	27
Auto Recording	27
Remote Recording	27
Serial Recording	27
Manual Recording	27
Program Recording	27
Saving and Loading Record Programs	29
Auto Recording	30
Remote Recording	31
Serial Recording	31
Record Tally Outputs	31

6 Playing & Downloading 32

Track List Display	32
Play Download	33
Play Program	34
Play Stream	36
Play File	37

7 Archiving 39

The Archiving Process	39
Configuring Archival To A Networked PC	39
Alarm Enabled	40
Buffer Size	40
Warn Time	40
Arrange Archive Audio into Fixed Duration Files	40
Target File Duration	40
File Type	40
Destination IP Address	40
Target Folder Share Name	40
Auto Purge on Record Stop Enabled	40
Format of Archived Files	41
Beginning to Archive	41

8 Auto-Archive 43

Introduction	43
Licensing	43
The Net-Log List	44
The Status Bar	44
Performance	44
System Set-up	44
Starting The Archive	44
The Settings Screen	45
E-Mail	45



Auto-Delete Archives	46
Device List	46
The Status Screen	46
The Control Screen	47
The Archive Screen	48
The Event Log Screen	48
Reports	50
Status Report	50
Error Report	50
Possible Errors	50
Archive Warn Report	50
Archive Alarm Report	50

9 Serial Control Interface **51**

Televic CE2500 Interface	52
Televic CE2500 Protocol	54
AMX/Crestron Interface	56
AMX/Crestron Protocol	56

10 Options **60**

Saving and Loading Options	60
Record Options	60
Disable	61
Override Enabled	61
Format	61
Mode	61
Channels	61
Sample Rate & Bit Rate	61
Start Level	61
Start Duration	61
Stop Level	61
Stop Duration	61
Service Names	62
Record Capacity	62
Archive Options	62
Alarm Enabled	63
Buffer Size (Mbytes)	63
Warn time prior to data loss	63
Arrange Archive Audio into Fixed Duration Files	63
Target File Duration (mins)	63
Target File Type	63
Destination IP Address	63
Target Folder Share Name	63
Auto Purge on Record Stop Enabled	63
Archive Auto Continue Enabled	63
Play Options	64
Use Defaults	64
Default Play Screen	64
Play Download Defaults:	64
Select Audio By Cut and Generate File Name From Cut Details	64
Folder	64
File Type and Bit Rate	64
Play Program Defaults:	65
Auto Create Program Name and Download Separate Cut For Selected Days	65
Folder	65
File Type and Bit Rate	65
Play Stream Defaults:	65



FIGURES

CONTENTS



CONTENTS

Ignore cut end time selection	65
Play File Defaults:	65
Folder	65
Remotes Options	65
Disabled	66
Momentary	66
Latching	66
Normally Off, Switched On For Alarm Condition	66
Clock Source Options	66
Control Options	67
No Control/Interface Selected	67
Televic CE2500	67
AMX/Crestron	67
Net-Log-Win Options	69
Info Font	69
User Font	69
Information	70
11 The Administrator	71
Licenses	71
Accounts Editor	71
“admin”	71
“user1” to “user25”	71
“guest”	71
Function Access – View	72
Function Access – Control	73
User Name & Password	73
The Onboard Clock	73
Updating The Onboard Clock	74
Network Settings	74
Updating Firmware	75
Resetting The Net-Log	76
12 Tools	77
Show Cut List	77
Auto Refresh Cut Display	77
Play Cut Auto Load	77
Hide Unavailable Cuts	77
Suspend Play Programs	77
Log Play Program Operation	77
Deleting Cuts	78
View	78
Net-Log Connections	78
Net-Log Status	78
Network Stats	80
Audio Header Info	81
Play Program Log	81
About Sonifex Net-Log	82
13 Technical Specification - Net-Log	83
MP2 Record Data Rates	84
MP3 Data Rates Supported For Play Download	85
Pin Connections	86
Glossary	88
Index	90



Figures

Fig 1-1: Net-Log System Block Diagram.	1
Fig 1-2: Single Net-Log Connection example.	2
Fig 1-3: Multiple Net-Log Connection example.	3
Fig 2-1: The Front Panel.	5
Fig 2-2: The Rear Panel.	7
Fig 3-1: Network Topology.	9
Fig 3-2: Maximum Simultaneous Streams.	10
Fig 3-4: Net-Log-Win Installation.	13
Fig 4-1: The Initialisation Screen.	19
Fig 4-2: The Licensing Screen.	20
Fig 4-3: The Login Screen.	21
Fig 4-4: The Net-Log Device List Editor.	22
Fig 4-5: User Details.	23
Fig 4-6: General Screen Layout.	24
Fig 5-1: Manual Record Screen.	26
Fig 5-2: Program Record Screen.	28
Fig 5-3: Program Record Popup Menu Commands.	29
Fig 5-4: Auto Record Mode.	30
Fig 6-1: Play Download Screen.	32
Fig 6-2: Play Program Screen.	34
Fig 6-3: Play Stream Screen.	36
Fig 6-4: Minimum Play Stream Delays.	37
Fig 6-5: Play File Screen.	37
Fig 7-1: Archive Options Screen.	39
Fig 7-2: Archive Screen.	41
Fig 8-1: The Status Screen.	43
Fig 8-2: The Net-Log List.	44
Fig 8-3: The Settings Screen.	45
Fig 8-4: The Status Screen.	47
Fig 8-5: The Control Screen.	48
Fig 8-6: The Archive Screen.	49
Fig 8-7: The Event Log Screen.	49
Fig 9-1: Control Options Screen.	51
Fig 9-2: Televic CE2500 Interface Options.	52
Fig 9-3: Additional Play Cut List Columns.	53
Fig 10-1: Record Options.	60
Fig 10-2: Archive Options.	62
Fig 10-3: Play Options.	64
Fig 10-4: Record Remotes Options.	65
Fig 10-5: Clock Source Options.	66
Fig 10-6: Control Interface Options.	67



FIGURES

FIGURES



FIGURES

Fig 10-7: Televic CE2500 Control Options.	68
Fig 10-8: Net-Log-Win Options.	69
Fig 10-9: Information.	70
Fig 11-1: Net-Log Administrator Menu.	71
Fig 11-2: Accounts Editor.	72
Fig 11-3: Function View.	72
Fig 11-4: Function Control.	73
Fig 11-5: Select or Edit User Name & Password.	73
Fig 11-6: Network Settings.	75
Fig 11-7: Upgrading Firmware.	76
Fig 12-1: Net-Log Tools Menu.	77
Fig 12-2: Net-Log Connections Screen.	78
Fig 12-3: Net-Log Status Screen.	80
Fig 12-4: Net-Log Stats Screen.	80
Fig 12-5: Net-Log Audio Header Info Screen.	81
Fig 12-6: Play Program Log Screen.	81
Fig 12-7: Net-Log About Screen.	82



License Agreement

This is a legal agreement between you, the end user, and Sonifex Limited.

BY PROCEEDING WITH THE INSTALLATION OR USE OF THE SOFTWARE, YOU AGREE TO BE BOUND BY THE TERMS OF THIS AGREEMENT. IF YOU DO NOT AGREE TO THE TERMS OF THIS AGREEMENT, DO NOT INSTALL OR USE THIS SOFTWARE.

Sonifex Limited ("Sonifex") and the individual or entity acquiring the Software ("Licensee"), agree as follows:



LICENSE AGREEMENT

1 Definitions

"Software" means the computer program(s) in machine-readable form furnished to Licensee by Sonifex or Sonifex's suppliers, in whatever media and by whatever method. Software includes any related update or upgrade programs that may be added from time-to-time.

"Hardware" means the equipment, furnished to Licensee by Sonifex or Sonifex's suppliers, to which the Software relates. Hardware is to be used solely in conjunction with the Software.

2 Software License

- a Sonifex hereby grants to Licensee a non-exclusive, non-transferable license to use the Software for Licensee's internal purposes only, on any computer possessed by Licensee on which the Software is designed to operate, such use to be in accordance with and subject to the terms and conditions of this Agreement.
- b Licensee shall not distribute, lend, incorporate, modify, or use the Software for any purpose except as expressly provided herein. Licensee may transfer rights under this Agreement on a permanent basis, provided all copies of the Software and all written materials are transferred, and the recipient agrees to the terms of this Agreement.
- c If Licensee fails to comply with the provisions of this Agreement, the License is automatically terminated.
- d Except for the rights expressly granted herein to Licensee, the title and all intellectual property rights in and to the Software and any copy of the Software which may be made by Licensee hereunder remain the sole and exclusive property of Sonifex and/or Sonifex's licensors.

3 Limited Warranty & Remedies

- a Sonifex warrants to Licensee that the media containing the Software will be free from defects in materials and workmanship under normal use and service for a period of ninety (90) days from the date of delivery.
- b Sonifex further warrants that (a) the Software will perform substantially in accordance with the accompanying Product Manual(s) for a period of ninety (90) days from the date of delivery; and (b) any Sonifex supplied Hardware accompanying the Software will be free from defects in materials and workmanship under normal use and service for a period of one year from the date of receipt. Any implied warranties on the

LICENSE AGREEMENT

Software and Hardware are limited to ninety (90) days and one (1) year, respectively, or the shortest period permitted by applicable law, whichever is greater.

- c Any products which are not returned to Sonifex within the warranty period or which have been subject to accident, abuse, misuse, alteration, neglect, or unauthorised repair or installation are not covered by warranty.

4 Warranty Disclaimer

EXCEPT FOR THE ABOVE EXPRESSED LIMITED WARRANTIES, SONIFEX MAKES NO WARRANTIES ON THE SOFTWARE, WHETHER EXPRESSED, IMPLIED, STATUTORY, OR IN ANY OTHER PROVISION OF THIS AGREEMENT OR COMMUNICATION WITH LICENSEE, AND SONIFEX SPECIFICALLY DISCLAIMS ANY IMPLIED WARRANTY OF MERCHANTABILITY OR FITNESS FOR A PARTICULAR PURPOSE. SONIFEX DOES NOT WARRANT THAT THE OPERATION OF THE SOFTWARE BY LICENSEE WILL BE UNINTERRUPTED OR ERROR FREE. LICENSEE ASSUMES RESPONSIBILITY FOR SELECTION OF THE SOFTWARE AND HARDWARE TO ACHIEVE ITS INTENDED RESULTS, AND FOR THE PROPER INSTALLATION, USE, AND RESULTS OBTAINED FROM THE SOFTWARE. EXCEPT FOR THE ABOVE EXPRESSED LIMITED WARRANTIES, LICENSEE ASSUMES THE ENTIRE RISK OF THE SOFTWARE PROVING DEFECTIVE OR FAILING TO PERFORM PROPERLY AND IN SUCH EVENT, LICENSEE SHALL ASSUME THE ENTIRE COST AND RISK OF ANY REPAIR, SERVICE, CORRECTION, OR ANY OTHER LIABILITIES OR DAMAGES CAUSED BY OR ASSOCIATED WITH THE SOFTWARE.

SONIFEX'S SOLE LIABILITY, AND LICENSEE'S SOLE REMEDY, IS SET FORTH ABOVE.

5 Object Code

Licensee shall not attempt to reverse translate, de-compile or otherwise attempt to derive the source code of the Software. In the event any source code is explicitly licensed to Licensee as part of the Software, such limitation will not apply to such source code. Licensee shall not alter or remove from the Software any copyright, trademark or other proprietary notices of Sonifex and/or Sonifex's licensors. Any use or attempted use of the Software in violation of the foregoing restrictions is a breach of the Agreement which will cause irreparable harm to Sonifex, entitling Sonifex to injunctive relief in addition to all legal remedies.





6 Limitation of Liability

- a Licensee agrees that Sonifex's entire liability to Licensee and Licensee's sole remedy hereunder for any cause whatsoever, regardless of the form of the action, and at Sonifex's option, shall be limited to either (a) the price paid to Sonifex for the Software and Hardware or (b) repair or replacement of the Software or Hardware that does not meet Sonifex's Limited Warranty and which is returned to Sonifex with a copy of Licensee's receipt or invoice. Any replacement Software or Hardware will be warranted for the remainder of the original warranty period or 30 days, whichever is longer.

- b TO THE MAXIMUM EXTENT PERMITTED BY APPLICABLE LAW, SONIFEX AND ITS SUPPLIERS SHALL NOT BE LIABLE FOR ANY OTHER DAMAGES WHATSOEVER (INCLUDING, WITHOUT LIMITATION, DAMAGES FOR LOSS OF BUSINESS PROFITS, BUSINESS INTERRUPTION, LOSS OF BUSINESS INFORMATION, OR OTHER PECUNIARY LOSS) ARISING OUT OF THE USE OF OR INABILITY TO USE THIS SONIFEX PRODUCT, EVEN IF SONIFEX HAS BEEN ADVISED OF THE POSSIBILITY OF SUCH DAMAGES. IN ANY CASE, SONIFEX'S ENTIRE LIABILITY UNDER ANY PROVISION OF THIS AGREEMENT SHALL BE LIMITED TO THE AMOUNT ACTUALLY PAID FOR THE SOFTWARE AND HARDWARE.

7 Copyright

The Software is owned by Sonifex and is protected by United Kingdom copyright laws, international treaty provisions and all other applicable national laws.

This Agreement is governed by the laws of England.



NET-LOG LICENSE FORM

Net-Log License Form

To provide a license for your Net-Log, Sonifex requires the following information:

License reference code from the Administrator Menu -> Licenses screen.

Ethernet MAC address from the Administrator Menu -> Licenses screen.

Serial number from rear of Net-Log.

Number of consecutive streams to be licensed (2, 5 or upgrade 2-5)

Your name and address

Agent or distributor purchased from

At least one of the following:

Telephone (inc country code)

Fax number (inc country code)

Email address

Please send this form to:

Net-Log Licensing
Sonifex Ltd
61 Station Road
Irthlingborough
Northants NN9 5QE
United Kingdom

OR telephone during
UK working hours to
+44 (0)1933 650700

OR Fax to
+44 (0)19333 650726

OR email all this information to
netlog.support@sonifex.co.uk

OR fill in the form which can be
found on our website
www.sonifex.co.uk/netlog

NET-LOG LICENSE FORM





Warranty & Safety Information


Warranty and Liability

Important: the purchaser is advised to read this clause

- (a) The Company agrees to repair or (at its discretion) replace Goods which are found to be defective (fair wear and tear excepted) and which are returned to the Company within 12 months of the date of despatch provided that each of the following are satisfied:
- (i) notification of any defect is given to the Company immediately upon its becoming apparent to the Purchaser;
 - (ii) the Goods have only been operated under normal operating conditions and have only been subject to normal use (and in particular the Goods must have been correctly connected and must not have been subject to high voltage or to ionising radiation and must not have been used contrary to the Company's technical recommendations);
 - (iii) the Goods are returned to the Company's premises at the Purchaser's expense;
 - (iv) any Goods or parts of Goods replaced shall become the property of the Company;
 - (v) no work whatsoever (other than normal and proper maintenance) has been carried out to the Goods or any part of the Goods without the Company's prior written consent;
 - (vi) the defect has not arisen from a design made, furnished or specified by the Purchaser;
 - (vii) the Goods have been assembled or incorporated into other goods only in accordance with any instructions issued by the Company;
 - (viii) the defect has not arisen from a design modified by the Purchaser;
 - (ix) the defect has not arisen from an item manufactured by a person other than the Company. In respect of any item manufactured by a person other than the Company, the Purchaser shall only be entitled to the benefit of any warranty or guarantee provided by such manufacturer to the Company.



WARRANTY & SAFETY INFORMATION

- 
- (b) In respect of computer software supplied by the Company the Company does not warrant that the use of the software will be uninterrupted or error free.
 - (c) The Company accepts liability:
 - (i) for death or personal injury to the extent that it results from the negligence of the Company, its employees (whilst in the course of their employment) or its agents (in the course of the agency);
 - (ii) for any breach by the Company of any statutory undertaking as to title, quiet possession and freedom from encumbrance.
 - (d) Subject to conditions (a) and (c) from the time of despatch of the Goods from the Company's premises the Purchaser shall be responsible for any defect in the Goods or loss, damage, nuisance or interference whatsoever consequential economic or otherwise or wastage of material resulting from or caused by or to the Goods. In particular the Company shall not be liable for any loss of profits or other economic losses. The Company accordingly excludes all liability for the same.
 - (e) At the request and expense of the Purchaser the Company will test the Goods to ascertain performance levels and provide a report of the results of that test. The report will be accurate at the time of the test, to the best of the belief and knowledge of the Company, and the Company accepts no liability in respect of its accuracy beyond that set out in Condition (a).
 - (f) Subject to Condition (e) no representation, condition, warranty or other term, express or implied (by statute or otherwise) is given by the Company that the Goods are of any particular quality or standard or will enable the Purchaser to attain any particular performance or result, or will be suitable for any particular purpose or use under specific conditions or will provide any particular capacity, notwithstanding that the requirement for such performance, result or capacity or that such particular purpose or conditions may have been known (or ought to have been known) to the Company, its employees or agents.

- (g) (i) To the extent that the Company is held legally liable to the Purchaser for any single breach of contract, tort, representation or other act or default, the Company's liability for the same shall not exceed the Price of the Goods.
- (ii) The restriction of liability in Condition (g)(i) shall not apply to any liability accepted by the Seller in Condition (c).
- (h) Where the Goods are sold under a consumer transaction (as defined by the Consumer Transactions (Restrictions on Statements) Order 1976) the statutory rights of the Purchaser are not affected by these Conditions of Sale.



Returning the Warranty Card

In order to register the date of purchase so that we can keep you informed of any design improvements or modifications, it is important to complete the warranty registration document that is enclosed and return it to Sonifex Ltd in the UK, or register online at www.sonifex.co.uk/register

For your own records you should write down the serial number (which can be found on the rear of the Net-Log) and software versions (which is found in the About menu screen of Net-Log-Win, which is accessed via the help menu).

Serial Number	
Net-Log-Win Version	V
Net-Log-Win Play Filter Version	V
Net-Log Base Version	V
Net-Log Version	V



Reporting Software Bugs

Whilst every effort has been made to ensure that the Net-Log-Win software is bug-free, it is possible that there are bugs in the software. If you find any bugs, please report them to Sonifex because it helps us to improve the quality of the product and we will usually be able to issue another version of software onto the Sonifex website for you to download and upgrade your Net-Log.

Report any bugs by email to: netlog.support@sonifex.co.uk

When you report a bug, please add the following points:

- The Net-Log serial number, the Software versions, and the License status you are using. All of which can be found in the About menu screen (Figure 11.6).
- If the bug is associated with Audio timing or data please include the data from the audio header screen (Figure 11.5)
- A contact who we can get in touch with regarding the problem, together with a reply email address.
- What you were doing when the bug occurred.
- What actually happened, in as much detail as possible.
- What you think the problem was caused by.

The more information you include, the easier it is to find the bug and cure it so please add as much information as you can.

Unpacking the Net-Log

Each Net-Log is shipped in protective packaging and should be inspected for damage before use. Where an item is found to have transit damage, notify your supplier immediately with all the relevant details of the shipment. Packing materials should be kept for inspection and also for if the product needs to be returned.

Safety of Mains Operated Equipment



This equipment has been designed to meet the safety regulations currently advised in the country of purchase and it conforms to the safety regulations specified by use of the CE Mark.

The power supply is rated to 95 - 265VAC at 47 – 63Hz with a fuse of 2A.

Warning: There are no user serviceable parts inside the machine. If you should ever need to look inside the unit, always disconnect the mains supply before removing the equipment covers.

Fuse Rating

The Net-Log is supplied with a single fuse in the live conducting path of the power-in feed at the power supply. For reasons of safety it is important that the correct rating and type of fuse is used. Incorrectly rated fuses could present a possible fire hazard, under equipment fault conditions.

Power Cable and Connection

An IEC power connector is supplied with the Net-Log, which has a moulded plug attached – this is a legal requirement. If no moulded plug has been supplied with your Net-Log, please contact your supplier, because an IEC connector is always supplied from the Sonifex factory.

If for any reason, you need to use the Net-Log with a different power cable, you should use the following wiring guidelines

Wire Colour	Connection
Green, or green and yellow	Earth (E)
Blue, or Black	Neutral (N)
Brown, or Red	Live (L)



WEEE & RoHS Directives - Sonifex Statement

The Waste Electrical and Electronic Equipment (WEEE) Directive was agreed on 13 February 2003, along with the related Directive 2002/95/EC on Restrictions of the use of certain Hazardous Substances in electrical and electronic equipment (RoHS).

The Waste Electrical and Electronic Equipment Directive (WEEE) aims to minimise the impacts of electrical and electronic equipment on the environment during their life times and when they become waste. It applies to a huge spectrum of products. It encourages and sets criteria for the collection, treatment, recycling and recovery of waste electrical and electronic equipment. All products manufactured by Sonifex Ltd have the WEEE directive label placed on the case. It gives a contact for individuals who are unsure about the correct procedure when the product has reached its "end of use".

Sonifex Ltd will be happy to give you information about local organisations that can reprocess the products, or alternatively all products that have reached "end of use" can be returned to Sonifex and will be reprocessed correctly free of charge.

Sonifex Ltd has phased out the use of certain hazardous substances identified in the European Union's Restriction of Hazardous Substances (RoHS) directive. The RoHS directive limits the use of certain hazardous substances currently used in EEE manufacture, including lead, mercury, cadmium, hexavalent chromium, and halide-containing compounds PBB (polybrominated biphenyl) and PBDE (polybrominated diphenyl ether). Elimination of these substances will result in more environmentally friendly recycling of electronic equipment. For the products which Sonifex manufacture, the main area where products were affected was in the use of lead for manufacturing and assembling electronics circuit boards.

Sonifex Ltd practices lead-free (LF) manufacturing processes. LF solder is used on the surface-mount PCB manufacturing processes and for hand soldering. The printed circuit boards (PCBs) used are either gold plated, or immersion tin plated, both of which use no lead. Historically the PCBs were hot air solder levelled (HASL) PCBs which used tin/lead based solder.

The manufacturing processes include the assembly of purchased components from various sources. Product is offered as RoHS compliant, or LF, only after sufficient evidence is received from the component manufacturers that their components are RoHS compliant. Sonifex Ltd relies solely on the distributor, or manufacturer, of the components for identification of RoHS compliance. Thus whilst every effort is made to ensure compliance, Sonifex Ltd makes no warranty, or certification, or declaration of compliance concerning said components.

Sonifex Ltd defines "Lead Free" as pertaining to any product, which has been manufactured by Sonifex Ltd using components which have been declared by the manufacturers as "Lead Free". All statements by Sonifex Ltd of RoHS compliance are based on component manufacturer documentation.

1 Introduction

General Overview

The principal behind the Net-Log logger is that generally speaking, computers should not be used for recording audio where their general unreliability can cause system crashes or lockups, with little regard for the security of the audio being recorded. However, for playback, using computers is perfectly acceptable and probably preferable, due to the ability to manipulate and edit the audio, provided it is in a suitable format.



INTRODUCTION

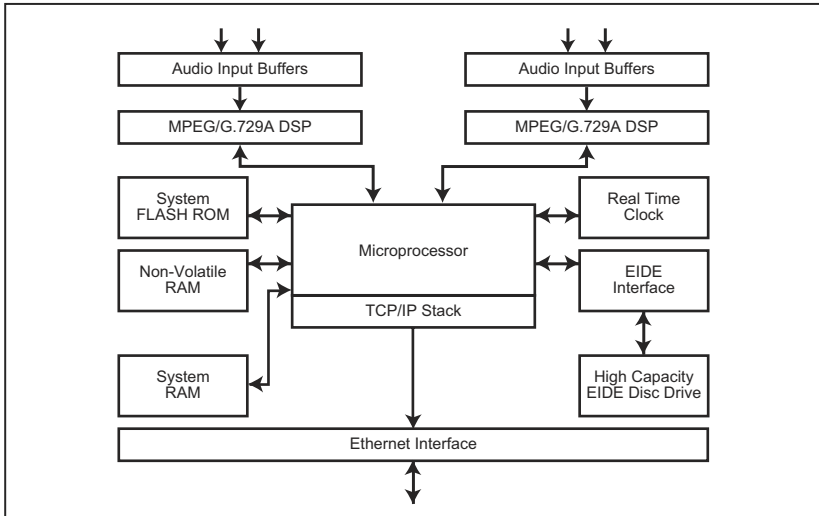


Fig 1-1: Net-Log System Block Diagram.

The Net-Log

The Net-Log is a 1U rack-mount, hardware audio recorder, designed primarily for audio logging in a broadcast environment. It is able to record up to 4 mono, or 2 stereo audio feeds, which are saved onto a large internal IDE hard disk. The hard disk is continuously overwritten, allowing access to all the audio recorded on it. Apart from the front panel mounted record override button, all functions and configurations are controlled via the Ethernet TCP/IP network connection using the supplied Windows control software package.

Net-Logs can be used singularly (Fig 1-2), or if more record channels are required, multiple Net-Logs can easily be configured to operate on the same Network (Fig 1-3).

1 INTRODUCTION



INTRODUCTION

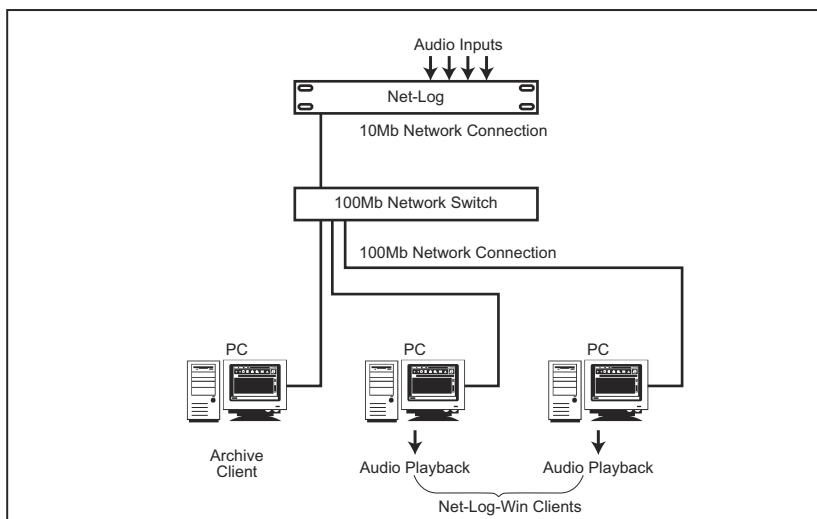


Fig 1-2: Single Net-Log Connection example.

Net-Log Control Software

Net-Log works in conjunction with a software control package that runs under Windows. This package consists of Net-Log-Win, Net-Util and Net-Log Auto-Archive. Net-Log-Win is the main control and configuration program. Net-Util is a configuration and monitoring utility that communicates with Net-Log via a serial connection. Net-Log Auto-Archive is a program designed to Archive audio data from multiple Net-Logs simultaneously.

Recording

Audio presented to the inputs is encoded in one of two user selectable formats, MPEG layer 2 or G.729A (An additional license is required to enable the G.729A format – contact Sonifex Ltd for details). The compressed data is then written to the internal IDE hard disk drive. Recording can be either continuous or programmed to start and stop at selected times. Record set-up allows for mono/dual mono/stereo and sample-frequency/bit-rate selection, depending on record format selected.

When recording has started, these parameters can only be altered once the audio on the disk has been deleted. The hard disk audio cannot be deleted whilst the logger is recording.

Playing

Two methods of audio playback are supported by Net-Log in conjunction with the Net-Log-Win software. Sections of audio can be transferred to a file on the PC using the Play Download function. These files can then be played using Net-Log-Win's media file player. Alternatively, Play Stream offers the ability to play audio direct from the Net-Log.

Archiving

Archive is an automated method of transferring audio data from one or more Net-Logs to a designated PC via the Network interface. When the audio data arrives at the PC, it can be arranged into files of a predetermined size. These files can then be copied to a removable media for long-term storage. If temporary audio storage is required, to satisfy broadcast authority requirements for example, then Archiving may not be necessary as the large hard drives used in Net-Log can, depending on the format or bit rate of the recordings, hold several weeks of audio. Sections of the audio could be downloaded as required using the Play Download function. The Net-Log-Win software provides a simple method of Archiving audio data for users with a single Net-Log. For larger installations where multiple Net-Logs are used, the Net-Log Auto-Archive package offers the ability to archive audio data from up to 20 Net-Logs simultaneously.

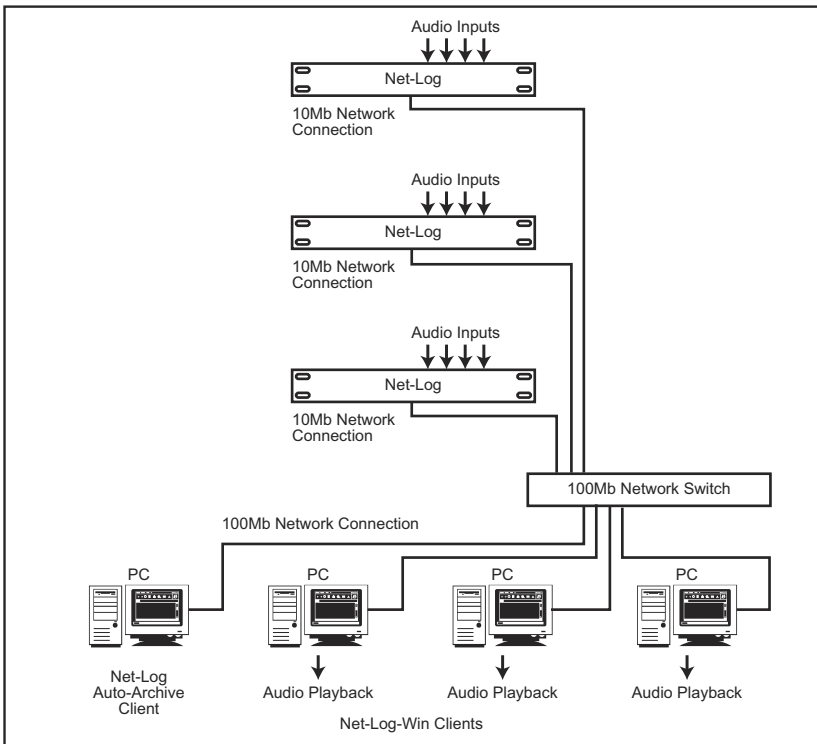


Fig 1-3: Multiple Net-Log Connection example.

1 INTRODUCTION



INTRODUCTION

Network

The speed of the network connection on Net-Log is 10Mbps, and the physical connection is made via a BNC connector for coax cables, or a RJ45 connector for twisted pair cabled networks. For maximum network performance, the Net-Logs and client PCs' should be linked via a network Switch. This will cater for the Net-Logs' 10Mb connection whilst allowing the client PCs' to run at 100MB/1GB. In most applications, this arrangement will provide sufficient network performance for multiple clients to simultaneously access multiple Net-Logs. However, on existing networks where network traffic is already high, or where archiving audio from multiple Net-Logs running at high data rates, the required bandwidth of the network hardware needs to be carefully considered. In such cases a dedicated network may be required. The specification of the PC used as the Auto-Archive client will also need to be able to handle the large amounts of audio data being transferred. If the network hardware is incapable of handling the required data rates, Play Stream will be interrupted by periods of silence and audio data on the Net-Log may be overwritten before it can be archived to the target PC.

The following example illustrates a known working configuration and provides a starting point when considering larger systems.

5 Net-Logs each configured as follows:

4 mono channels of MPEG compression recording non-stop, 32 kHz sample rate, 192 kbps bit rate, archiving to a single Auto-Archive client PC via a dedicated 10/100Mb Network switch. The Auto-Archive client PC is an Intel PIII, 1GHz or equivalent fitted with a 100Mb network card.

This system provides sufficient bandwidth for continuous archiving plus the capability for additional Net-Log-Win clients to Play Stream audio.

Required Hardware

Audio can be delivered to a network-connected remote PC for live playback through an appropriate audio card. For recordings made using the MPEG format, a software codec supplied as part of the Windows 98/NT/2000/XP operating system, provides the decoding and conversion of the audio to a format supported by any standard Windows audio card capable of playing .wav files. Likewise, recordings made using G.729A are converted to the same Windows supported format by a software codec embedded in the Net-Log-Win software. Therefore, Net-Log-Win client PC's can play audio in both formats using a single audio card.

It is recommended to use a PC with the following minimum specification:

Pentium 166MHz

64MB RAM

Audio card & speakers as above

100Mbps network connection

Windows 98/NT/2000/XP

DirectX 6 or greater

2 Net-Log Hardware

Physical Description

The logger is housed in a 1U high 19" rack mount box. The front panel is chrome plated and there are chrome plated panel inserts for the fan inlet/outlet with domed labels for the "Sonifex" and "Net-Log".

Power

The unit is powered via an IEC filtered input for 95 – 265V supply at 47–63Hz, peak 60W, 30W average. There is an external fuse for the mains input that is rated at 2A. We recommend that the Net-Log is operated from an uninterruptable power supply. It should be noted that the record header is written regularly during the record process so if the power fails the data lost will be limited. At a bit rate of 192kbps this loss will be a maximum of 1 minute. Lower data rates will give proportionately greater time loss.

Level Indicators

There are four tri-colour LED's positioned on the front panel indicating input levels for each individual channel:

Led State	Meaning
Off	Input level < -18dBu
Yellow	-18dBu < Input level < 0dBu
Green	0dBu < Input level < 12dBu
Red	Input level >12dBu

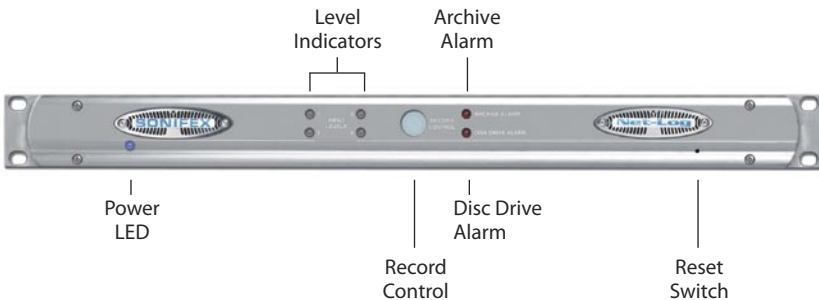


Fig 2-1: The Front Panel.



NET-LOG HARDWARE



Record Control/Indicator

This backlit button gives an indication of what channels are currently being recorded and can also be used to give limited control over the recording. When pressed, the button will flash indicating that a record start or stop has been initiated and must be pressed again within three seconds to confirm the action. The LED states and their relative modes are shown below:-

Button State	Mode
Off	No channels recording
Fast flashing	Record Start/Stop initiated
Slow flashing	Some channels recording
On	All available channels recording

When the button is pressed, the Net-Log checks to see which channels can be altered using this button (See Options, Record Format options, Override Enabled). If recording, a confirmed button press will stop the recording. If not recording, a confirmed button press will start the recording on enabled channels.

Archive Alarm

This red coloured LED is used to warn of loss of data during a recording process. If the Net-Log is about to overwrite data that has not been archived on to a remote computer then this indicator will start to flash. The amount of warning time you get before data is lost can be configured in the main software.

Led State	Meaning
Off	Normal
Flashing	Data is about to be lost
On	Data has been lost

Disk Drive Alarm

A red coloured LED giving an indication that there has been an error reading/writing from/to the internal hard disk.

Reset Switch

Restarts the machine. NOTE that this does not overwrite any configurations and simply reboots the machine.

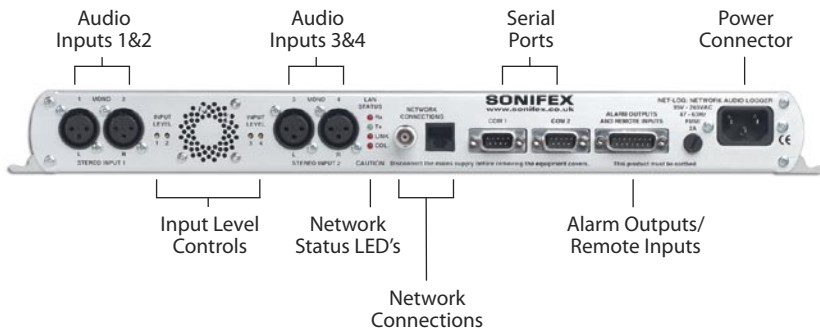


Fig 2-2: The Rear Panel.

Audio Inputs/Input Level Control

The audio inputs consist of four 3-pin XLR connectors (2-channel stereo, 4-channel mono) with independent level gain controls for each input, accessible through the rear-panel using a flat-blade screwdriver.

Network Status Indicators

There are four network status indicators, which are all labelled independently.

Rx	Receiving data
Tx	Transmitting data
Link	A network link has been established
Col	Network collision

Network Connections

There are two network connectors: one a BNC (coax, 10base2), and the other an RJ45 (10baseT). Either of these can be used for TCP/IP connection.

RS232 Serial Ports

There are two 9 pin D-Type connectors (COM1 and COM2) situated on the rear panel. COM1 is used for firmware updates and for updating the network settings, i.e. IP Address, Subnet Mask, etc. It can also be used as a messaging output for data analysis. COM2 is used for the Serial Control Interface.

The settings for COM1 are fixed at:-

Baud rate	115200
Data Bits	8
Parity	NONE
Stop Bits	1





Alarm Outputs And Remote Inputs And Outputs

The remote connector is a 15 pin male D-type, which has four remote inputs to control recording, four record tally outputs to indicate which channels are recording and a double-pole-double-throw alarm output relay which activates on either the Archive Alarm or the Hard-Disk Alarm.

The remote inputs and output can be driven by 5V logic. The inputs are active low. These can be set to momentary or latching action via the Remote Options screen. The record tally outputs are open-collector driven. See Chapter 13 for pin connection details.

3 Set-up & Installation

Adjusting Record Input Levels

The peak audio input levels are preset at +12dBu. This means that an audio signal of +12dBu, once encoded, will be at the maximum digital value. To change the peak audio input level, follow the procedure below.

- 1 Switch the unit on and while the alarm LED's on the front panel are flashing, press the record control button. The record button will illuminate.
- 2 Connect a constant audio signal at the required peak level to Input 1.
- 3 Adjust the Input 1 level control on the rear panel until the input level LED 1 on the front panel is green.
- 4 Repeat steps 2 & 3 for all 4 inputs. When you have finished, simply press the record control button and the Net-Log will complete its initialisation procedure.

The peak audio input levels can be changed at any time, but it should be noted that any ongoing recordings would be interrupted as the unit has to be power reset.

Network Topology

The network that the Net-Log is connected to must be a dedicated network, if you are to guarantee the audio being available for play streaming. The ideal configuration is shown in Fig 3-1, with the Net-Log(s) connected directly to a network switch, which is connected directly to dedicated network interface cards in the PC's. It is under these conditions that the test results have been achieved in Fig 3-2.

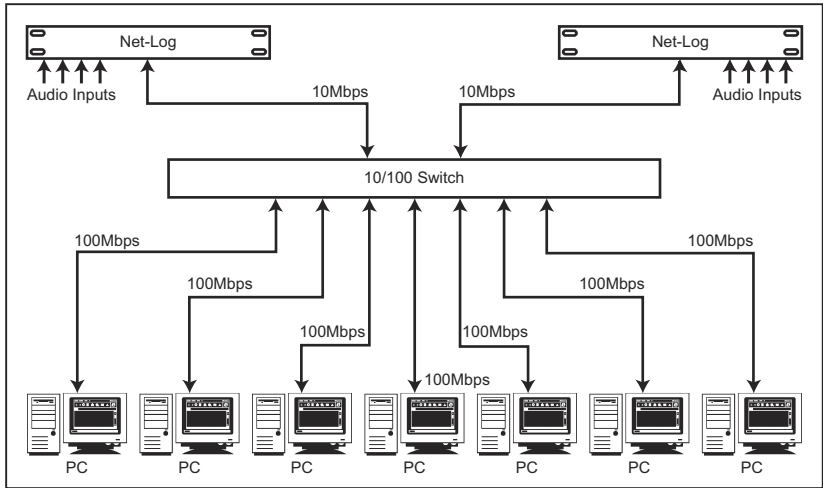


Fig 3-1: Network Topology.



3 SET-UP & INSTALLATION

Maximum Network Connections

The maximum number of people that can connect to the Net-Log and use Play Streaming simultaneously is dependent on the number of software licenses that have been bought and also the data rate of the recordings that you are making. The software license is available as either a 2-stream license, or a 5-stream license. Due to the low fixed bit rate of the G.729A record format, the type of license (2 or 5 streams) is the only limiting factor for the number of simultaneous Play Streams when G.729A is selected.

MPEG Record Bit Rate	Maximum number of simultaneous streams	Total stream rate
160 kbps	5 streams	800 kbps
192 kbps	4 streams	768 kbps
224 kbps	4 streams	896 kbps
256 kbps	3 streams	768 kbps
320 kbps	2 streams	640 kbps
384 kbps	2 streams	768 kbps

Fig 3-2: Maximum Simultaneous Streams.

Fig 3-2 shows the maximum number of streams, for the MPEG record format, for the given recording bit rate configured. These figures assume that there is no other activity on the network, including Archiving of Net-Log audio. The figures show that for 5 people to be able to simultaneously Play Stream one stereo channel of MPEG audio, the recording bit-rate must be set to 160kbps or less.

If you have two pairs of stereo channels on a Net-Log set at different bit-rates, the total number of people that can Play stream them is governed by the combined bit rates of the play streaming. The limit of the maximum total stream rate is around 900kbps.

Above this stream rate, play streaming will start to fail, i.e. there will be non-continuous audio and audio silences on playback.

E.g. 2 people play streaming 64kbps recording

$$= 2 \times 64\text{kbps} = 128\text{kbps, plus}$$

2 people play streaming 384kbps recording

$$= 2 \times 384\text{kbps} = 768\text{kbps}$$

Total = 896kbps, which is less than 900kbps and allowable.

Play streaming can occur with archiving also happening in the background. Archiving audio to a nominated hard-drive on the network happens at a maximum data rate of 1000kbps. This data rate falls if play streaming is occurring, because play streaming is given a priority over any other process. There is a downside of this priority, which is that if many people are

play streaming continuously for a number of hours (or days), the archiving data rate may fall below the recording data rate, so that the audio is not being archived as quickly as it is recorded.

You can calculate whether this will happen by subtracting the total maximum stream rate (calculated in the above example) from 1000kbps. If the remainder is less than the recording bit rate that you are archiving, then your archiving may happen at less than real time and will, eventually fail. Note: this does assume that the play streaming is at, or beyond, the maximum for a considerable length of time (to fill the Net-Log hard disk). Invariably, the play streaming is for "dip-in" access of a short duration (<1 hour) and the archive process has time to catch-up when there is no, or little, play streaming.

Connecting Net-Log To Your Network

Before connecting the Net-Log you first need to give it an IP Address, Subnet Mask and a Default Gateway. You may need to obtain these from your network administrator, but please note that the Net-Log is not compatible with DHCP (Dynamic Host Configuration Protocol) and DNS (Domain Name System).

To help in your selection of an IP Address for the Net-Log, following is a brief description of how IP Addresses and Subnet Masks work.

IP Addresses

An IP Address is used to determine where a node (PC, Printer etc.) is situated on a network. This address must be unique to the network, otherwise conflicts will occur. The actual address is made up of 32 bits, split into four sections (each section is called an octet). Held in the address is a network ID and host ID.

The network ID, or network address, is basically the address of the local network, and all nodes within that network must have the same network ID. The host ID part of the address identifies the node within that network.

There are three different classes of IP Address: A, B and C. These determine what parts of the address contain the network ID and the host ID, (Fig 3-3).



3 SET-UP & INSTALLATION



SET-UP & INSTALLATION

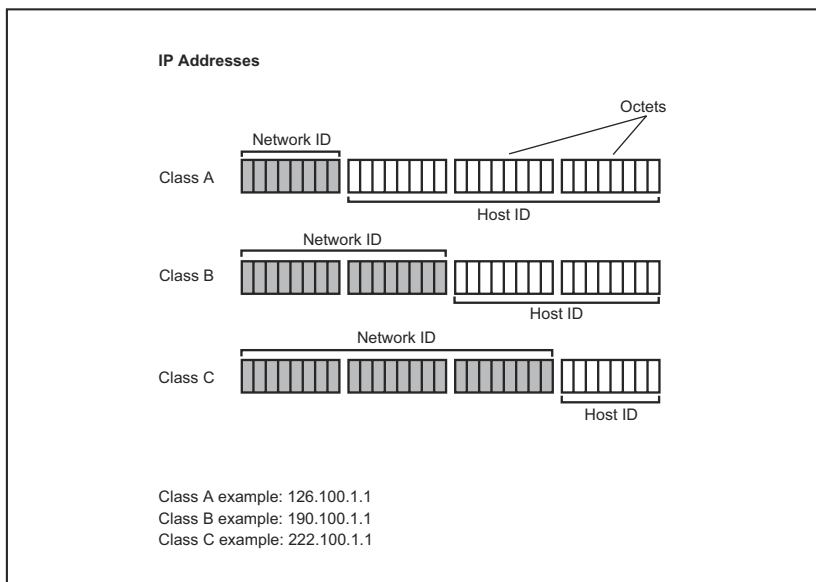


Fig 3-3: IP Addresses.

Class A address: The first octet contains the network ID and the second, third and fourth contain the host ID.

Class B address: The first and second octets contain the network ID and the third and fourth contain the host ID.

Class C address: The first, second and third octets contain the network ID and the fourth contains the host ID.

So, the network ID of the IP Address that you give the Net-Log must match the network address of the network on which you connect it and the host ID of the Net-Log's IP Address must be different to that of any other device on the network.

Subnet Masks

To determine which parts of an address contain the network ID and host ID we use a Subnet Mask, which has an identical format to the IP Address being made up of 32-bits, split up into four octets. It is configured as follows:

For every bit in the IP Address that contains the network ID the corresponding bit in the Subnet Mask must be set to binary 1, (i.e. the byte of 8 bits is set to "255"). For example if the IP Address is a class A address, the network ID is contained in the first octet. So the first eight bits of the address contain the Network ID. Therefore the first eight bits in the Subnet Mask must be set to binary 1, making it "255.0.0.0".

Installing Net-Log-Win Software

The procedure below describes how to install the PC software. As the initial set-up procedure will require the use of the Net-Log Serial Utility, the software must initially be installed on a PC with a free serial port.

- 1 Insert the Sonifex Software Installation CD into your CD-ROM drive.
- 2 The installation process should begin automatically. If it fails to start, select "Run..." from the Start Menu and type "x:\Index.htm" where x is the letter of your CD-ROM drive.
- 3 The installation starts by displaying a web page that has links to several software packages from Sonifex. Locate Net-Log-Win from the list and click on the link provided. The Net-Log-Win installation will begin as shown in Fig 3-4. Simply follow the on screen instructions to proceed. During the installation, Set-up will attempt to detect what version, if any, of DirectX is installed. DirectX is required for audio playback and Net-Log-Win requires that version 6 or later is installed. If a compatible version is not found, then the supplied DirectX 8.0 will be automatically installed.
- 4 The installation will place three shortcuts in the start menu – Net-Log-Win, Net-Util and Net-Log Auto-Archive.

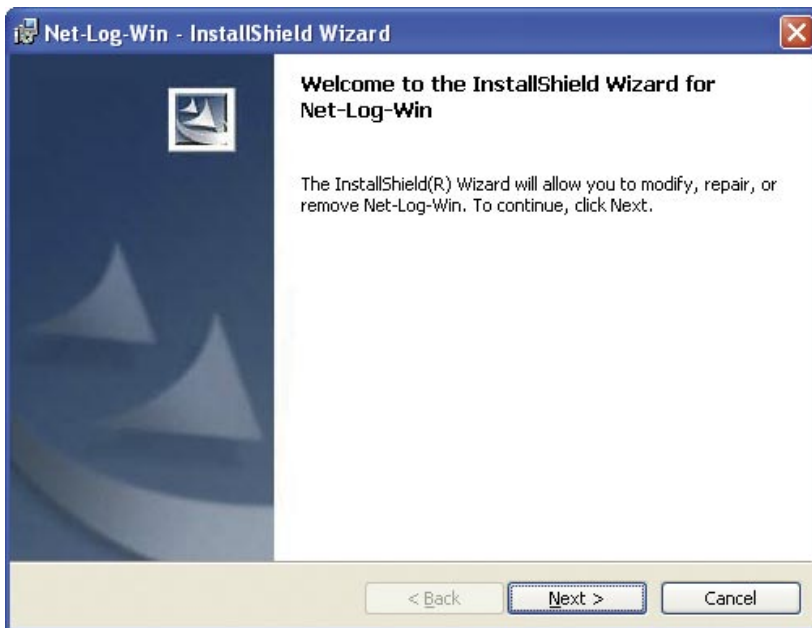


Fig 3-4 : Net-Log-Win Installation.

3

SET-UP & INSTALLATION



SET-UP & INSTALLATION

Entering Network Settings

To do this you need to start the Net-Log-Win Serial Utility (Fig 3-5 & 3-6), and connect one of your PC's available serial ports to the Net-Log's serial port (COM1). This is done with the null modem cable supplied with the Net-Log.

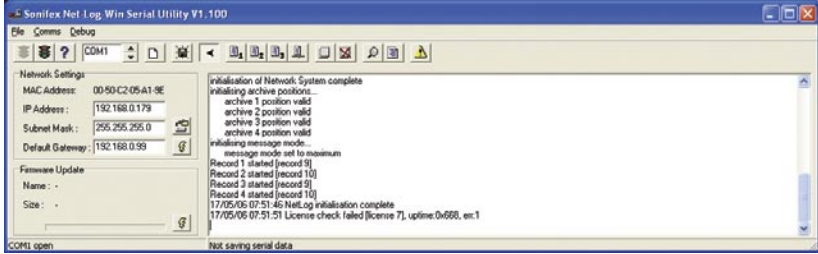


Fig 3-5: Net-Log-Win Serial Utility.

Select the relevant PC COM port number in the serial utility by using the up/down buttons (labelled "1" in Fig 3-6). Now press the Connect button (labelled "2"). To test the connection between the PC and Net-Log press the question mark Test button (labelled "3"). This sends a command to the Net-Log, and waits for a reply. If there is no reply, an error message box appears declaring that the connection test has failed.

If this occurs make sure that you have the Net-Log switched on, that all cables are correctly wired and connected, and that you have selected the correct COM port number.

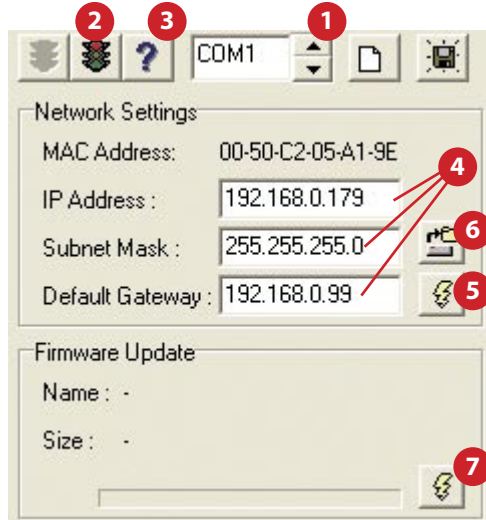


Fig 3-6: Detail of Net-Log-Win Serial Utility.

The wiring for the cable is shown in Fig 3-7. If the connection is successful a message box is displayed indicating this.

Now you need to enter the IP Address, Subnet Mask and Default Gateway (labelled "4"). The Default Gateway is defined as the target system's default route and is a convention used on all networks. If you have a bridge to another network, then set the IP Address of the Default Gateway to the IP Address of the bridge. If you are using the Net-Log on an isolated network or directly to a single PC, then set the Default Gateway IP Address to that of the Net-Log.

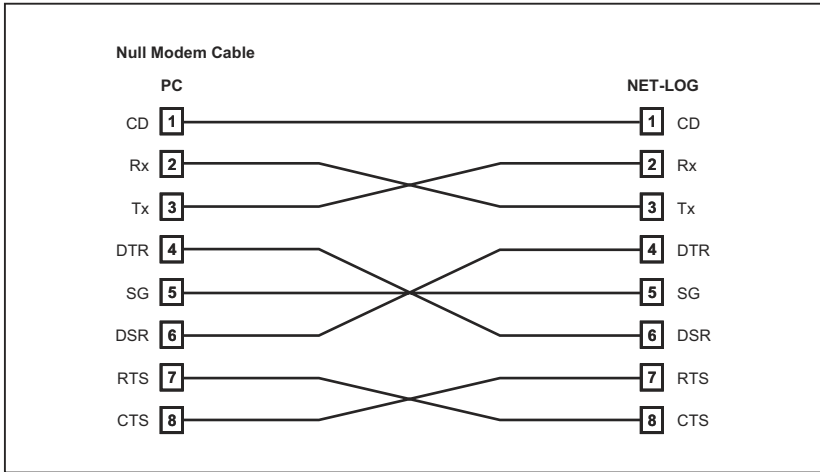


Fig 3-7: Diagram of a Null Modem Cable.

Check that the values have been entered correctly and press the Download button (labelled "5"). This writes the information to the Net-Log, and stores it in the system ROM.

If at anytime you need to check the IP Address of the Net-Log you can simply press the Reload button (labelled "6"). This loads the current network settings from the Net-Log and displays them. You can edit these if you need to and write any changes to the Net-Log by pressing the Download button again.

Enter the downloaded values here for future reference:

Net-Log Serial Number:	
IP Address:	. . .
Subnet Mask:	. . .
Default Gateway:	. . .

Note: This utility can also be used to download firmware upgrades directly to the Net-Log via the serial port (instead of using the Net-Log-Win software across the



network). To do this, click on the Firmware Update button (labelled "7"), select the relevant update file and press OK. The file will be downloaded to the Net-Log.

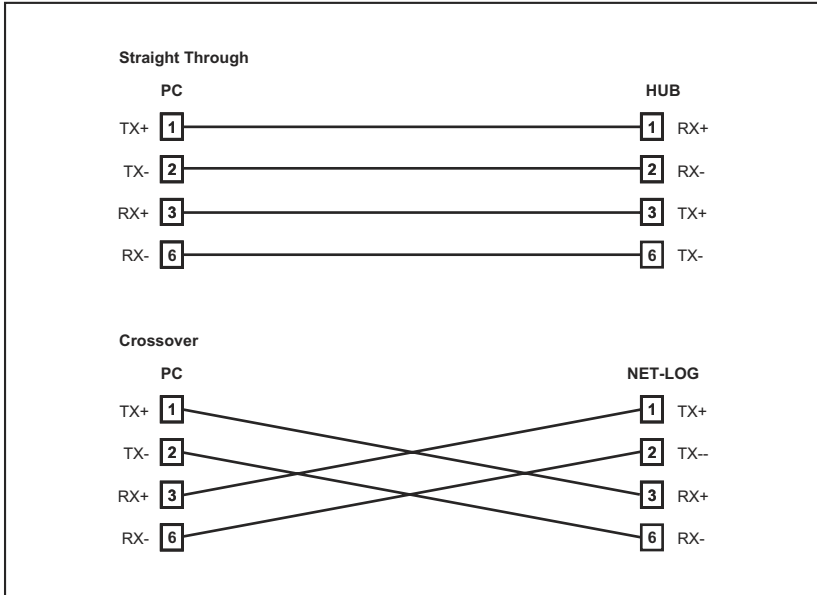


Fig 3-8: Diagram of 'straight through' and 'crossover' CAT5 cables.

During all these procedures the messages sent from the Net-Log can be monitored in the Message window. This shows the status of the update with regards to the network settings or firmware updating.

Net-Util also provides various tools for monitoring the status and operation of the connected Net-Log. These functions are available from the menu or by pressing the button showing the right arrow symbol. When this button is pressed, the icon changes to a left facing arrow to indicate that a further press will hide the additional controls. These buttons are shown in Fig 3-9. Whilst running Net-Util, you can place the mouse cursor above the button to show a brief description of the buttons' functionality.



Fig 3-9: Details of Net-Util Tool buttons.

The first button on the left in Fig 3-9 simply clears the main messaging window.



The next button allows the serial messages that are sent from Net-Log and displayed on the screen, to also be copied to a text file. This is particularly useful if a problem occurs on the Net-Log as the message window can only display the most recent messages.



The fourth, fifth and sixth buttons select the desired serial message mode. The button marked with a "1" selects minimum mode. In this mode, only details of fatal errors are displayed. The button marked with a "2" selects medium messaging mode. In this mode both fatal and non-fatal error details are displayed. In maximum mode, selected by pressing the button marked with a "3", system event details are also displayed.



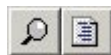
The next button enables network communication monitoring. This feature will display all input and output communications on the connected Net-Log and is intended for debugging purposes only – enabling it will severely affect the network performance of the Net-Log.



The next two buttons are used to display and clear the on-board message log on Net-Log. Each time Net-Log sends a serial message, it adds it to its own internal text log. This log is limited in size and only contains the most recent error/event messages.



The next two buttons are also intended as debug tools although their use will not affect Net-Log's performance. The first is used to display the current status of the network interface of the Net-Log. The second is used to display record cut information.



The last button is a "Reset all" button. This will return the connected Net-Log to its factory defaults. (Please note - use of this button will delete all audio on the connected Net-Log.)



Once all the required information has been entered into the Net-Log you are ready to connect the unit to your network.

Ideally, the unit should be connected directly to a switch, but if this is not possible or practical, connecting it to a hub should be sufficient. If you are using the RJ45 connector on the rear of the Net-Log, you should use twisted pair network cable (i.e. CAT5), wired "straight through" as shown in Fig 3-8.



3 SET-UP & INSTALLATION



If you are connecting your Net-Log directly to a network interface card in your PC, then you will require a “crossover” cable, which is also shown in Fig 3-8.

When you have the Net-Log switched on and connected to your PC or network, you can now run the Net-Log-Win software. Read the next section on Start-up and Login, which gives an explanation of the logging procedure and how to enter your Net-Log into the device list.

Note: It is important to fully configure each Net-Log prior to use. Once a successfully connection has been established, refer to section 10 which details all the configuration settings.

4 Startup & Login

Starting Net-Log-Win

To start the Net-Log-Win software, select the icon from your desktop or Start menu depending on how you installed the software. The startup screen will be displayed (Fig 4-1) normally followed by the Login Screen (Fig 4-3). However the first time the Net-Log is used the license manager screen (Fig 4-2) will be displayed.



Fig 4-1: The Initialisation Screen.

Maximum Concurrent Users

The Net-Log-Win software can be purchased as either a 2-stream license, or as a 5-stream license. This means that you can install the Net-Log-Win software on as many PC's in your network as you like, but that only 2, or 5 simultaneous accesses to the licensed Net-Log can be made respectively. If 2, or 5, users are using a Net-Log and another user tries to access it, a message will be displayed telling them that the allotted number of licenses are already in use.

Remember that if Archiving is enabled, this will use a license.

Multiple Net-Logs On A Network

Only one license is required per network regardless of the number of Net-Logs attached to that network. The first Net-Log connected will need to have a valid license and then all further Net-Logs should be set as slave units and will validate their license from this master. This means that the master will need to be attached at all times. If the master should be removed from the network the slave units will continue to be available for a period of 3 days. After this time they will still continue to record but will be inaccessible from the Net-Log-Win software. Reconnecting the master unit will re-enable all features.



Licensing Your Net-Log

The License Manager Screen (Fig 4-2) is shown when first connecting to a Net-Log or can be accessed from the Administrator menu. This dialog shows the unique boot code used to validate the master licenses and the 3 licensing options. These allow the user to set the unit as a master by entering the license code; as a slave by entering the TCP/IP address of a connected Net-Log master unit; or define the unit as a demo. Similar to disconnected slave units the demo allows for 3 days of normal operation and the unit can be upgraded at any time to function as a master or as a slave by entering the appropriate data. (Please note - Re-selecting the unit as a demo will delete all audio data and settings from the Net-Log.)

Obtaining License Codes

The license code must be obtained directly from Sonifex. You can do this in several ways, either by phone to Sonifex on +44 (0)1933 650700 during normal UK working hours; or by sending the form from the front of the manual by fax to +44 (0)1933 650726 or directly by post; or by completing the form on the supplied link or through our website www.sonifex.co.uk/netlog; or by supplying the information indicated on the form by email to support@sonifex.co.uk. Sonifex will endeavour to return the license codes as quickly as possible. In the mean time the machine can be used as a 2-stream license demo machine for 3 days.

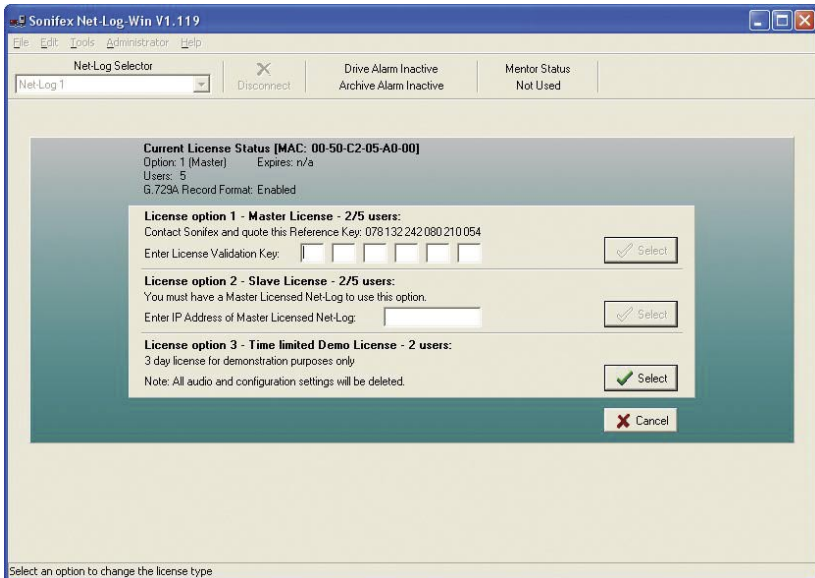


Fig 4-2: The Licensing Screen.

The Login Procedure

To enter the system, all users must specify a User Name and a Password.

These will then be compared to details which are stored onboard the Net-Log before the user can access the system. If the user enters the correct information, they will be allowed to use the PC interface to control the designated logger. If the user enters incorrect information, they will be asked to re-enter the User Name and Password.

To configure the system, enter a User Name of "admin" and a Password of "admin". The password should be changed once you are running the program.

There is a Net-Log Device List, which allows you to choose one of any number of Net-Logs connected to the network. When the software is loaded for the first time, no Net-Logs are available in the Device List, and a message box appears stating this. You will be taken automatically to the Device List editor, where you can add your Net-Log into the list.



Fig 4-3: The Login Screen.

The Device List Editor

To enter a Net-Log into the list you must give it a text name and the IP Address that was downloaded into the Net-Log as described in the "Setup & Installation" chapter. Once you have entered the Name and IP Address into the boxes, press the "Add" button, and it will now appear in the list.

4 STARTUP & LOGIN

The two up/down arrows on the right hand side are used to select the default Net-Log used when you have multiple units. The default unit is the one that is automatically selected when you login.

Multiple Net-Logs can be Added, Deleted and Replaced. See Fig 4-4.

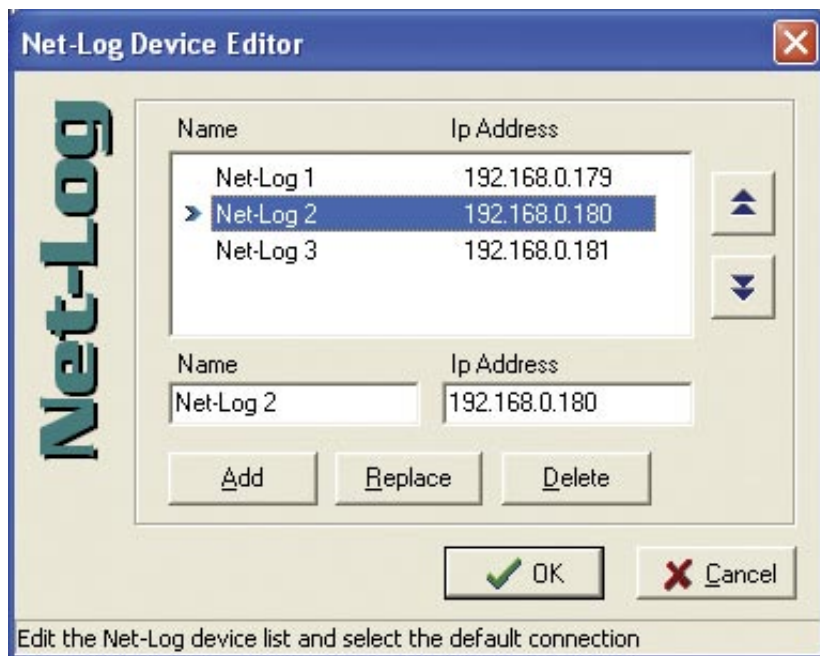


Fig 4-4: The Net-Log Device List Editor.

To edit the name or the IP Address of a device, select the unit in the list and edit its details that appear in the Name and IP Address text boxes. When you have finished, click the “Replace” button.

To delete a device contained in the list, select the unit, and then press “Delete”. Once you have finished entering the details of your Net-Log(s) into the device list press “OK”. This will return you to the Login screen.

Note: Prior to logging on to a new Net-Log for the first time, ensure that the clock on the PC is set correctly as this time will be used to update Net-Log’s onboard clock.

The software will attempt to connect to the Net-Log and when a connection has been established you will see the main screen.

If the main screen does not appear then there is a problem connecting to the Net-Log. Check that the IP Address entered in the device editor list is the same as the one downloaded using the Net-Log-Win Serial Utility. Secondly, check that the IP Address and

Subnet Mask are valid for your network. If invalid details are entered, the Net-Log will not appear on your network (see your system administrator for more information).

First Time Use of Net-Log

The first time you use the Net-Log you will need to setup the configuration for your particular application. The configuration is accessible from the Options tab. See Chapter 10 for full details. At the very minimum you will need to set up the Record Format, Record Media and Clock Source options.

Changing User Details

Once you have logged in for the first time it is advised that you change your User name and Password from the default settings to stop unauthorised access to your user account. To do this, select the Edit menu, and then User Details (Fig 4-5). Enter your new details and press "OK". If the "Cancel" button is pressed, none of the changes made will take effect.

Note that the password is case sensitive, and you must re-enter the password to confirm it is correct.

There is a special case available to demonstrate just the screen layout and use of the Net-Log-Win software that can be initiated by selecting a user name of demo and leaving the passwords blank.



The screenshot shows a Windows-style dialog box titled "User details". On the left side, the "Net-Log" logo is oriented vertically. The dialog contains three text input fields: "User Name" (containing "admin"), "Password" (containing "xxxxx"), and "Confirm Password" (which is empty). Below these fields are two buttons: "OK" with a green checkmark icon and "Cancel" with a red 'X' icon. At the bottom of the dialog, there is a text label that reads "Edit your user name and password".

Fig 4-5: User Details.



General Screen Layout

After logging in, the main screen appears (Fig 4-6). Whether all of the 4 main selection screens (Record, Archive, Play and Options) are displayed will vary depending on the user account that you have logged in with. However, the screen layout will remain the same throughout.

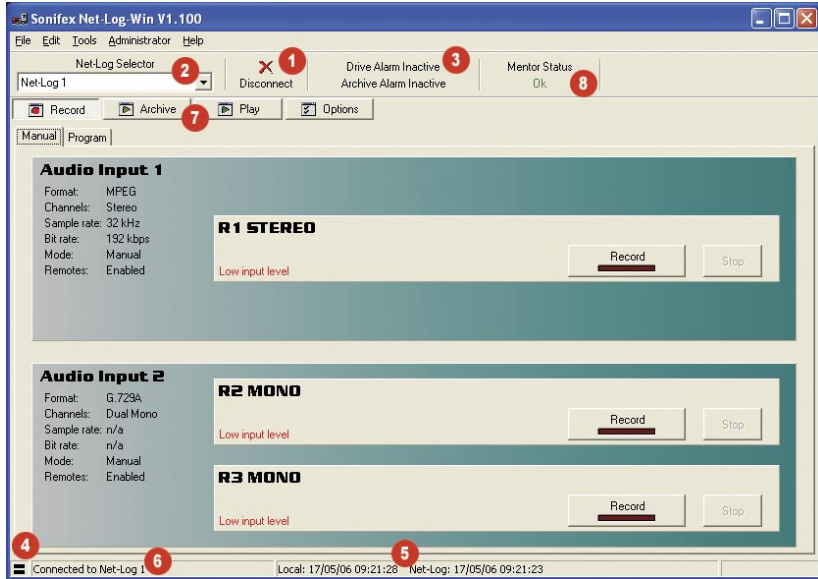


Fig 4-6 General Screen Layout.

- 1 Disconnect/Log-Off Button**

If you are currently connected to a Net-Log then this button allows you to disconnect and select a different unit. If you are not currently connected to a Net-Log, this allows you to log off and either log on as another user, or exit the application. Note that logging off, or disconnecting, from the Net-Log will not affect the operation of the Net-Log, i.e. it won't stop it recording, etc.
- 2 Net-Log Selector**

Use this to select other Net-Logs from the drop-down list and connect to them as the user that you are currently logged on as.
- 3 Alarm Indicators**

These replicate the LED alarms situated on the front panel of the Net-Log. The alarm conditions are also available on the remote connector.
- 4 Network Activity Indicators**

These are transmit Tx (left, red) and receive Rx (right, green) indicators showing data transfer between the Net-log and your client PC.

5 Net-Log & PC Time

Date and Time of the Net-Log clock and the local PC clock

6 Status Bar

General information is displayed here.

7 Screen Selection Buttons

These are used to switch between the different screens that are used to control the Net-Log.

8 Mentor Status Indicator

Status of the Mentor Time Server, used for synchronising the PC and Net-Log times on a network.





5 Recording

The Record Screen

This is where all recording actions are controlled. Each input channel (up to a maximum of four mono, or two stereo channels) can be controlled independently and is represented by a separate display panel. Each panel shows the current configuration and state for that channel. For convenience, it also monitors the levels of the audio inputs, and gives an indication of when there is “silence”, defined as an input of below -44dB , as shown in Fig 5-1. The record channels are configured using the Options screen.

There are two formats available for recording, MPEG and G.729A. MPEG allows for mono, dual mono and stereo channel selection as well as variable sample and bit rates. G.729A is a high compression, fixed bit rate, mono or dual mono record format. Its low bandwidth makes it ideal for recording speech and gives very high storage capability – approximately 13 minutes per Mbyte. G.729A can be used only after purchasing an additional license. Contact Sonifex Ltd for details.

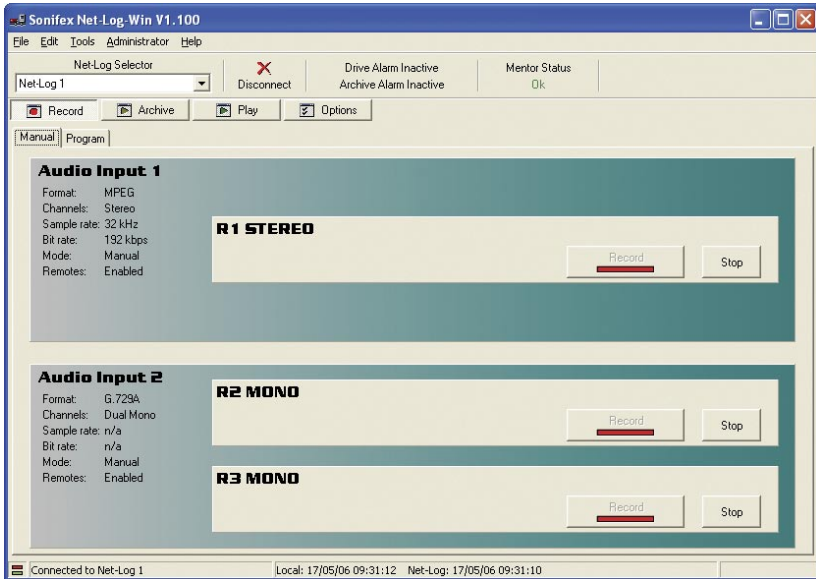


Fig 5-1: Manual Record Screen.

The Net-Log allows five methods of recording:

Manual Recording

Button presses control recordings on each logger channel.



Program Recording

Record control occurs automatically by defining a “time-sheet” for each channel.

Auto Recording

Record control occurs automatically as the input audio level rises above and below user-defined start and stop threshold levels. Auto record mode is not available when using the G.729A record format.

Remote Recording

Recordings can be started/stopped by connecting certain pins on the rear panel remote connector.

Serial Recording

Record is controlled by commands sent to the Net-Log via the Serial Port. See chapter 9 for protocol information.

Remote or Serial recording will operate regardless of whether Manual, Program or Auto record mode is selected in the Record Options page. Care should be taken to ensure the correct mode of operation is selected as no priority is given to either Remote or Serial recording when co-configured with Manual, Program or Auto record mode.

Note: The Net-Log can record up to a maximum of 250000 tracks on each configured partition on the hard drive. When the end of a partition is reached, recording continues at the start of the partition – over-writing existing data. Each time the record “loops” back to the beginning of a partition, the track count is reset and a further 250000 tracks are available. Once the 250000-track limit is reached, subsequent recordings will be appended to the 250000th track.

Manual Recording

To start recording manually, select the “Manual” tab, choose the channel you wish to begin recording on and press the relevant “Record Start” button. The Net-Log will start recording and the on-screen LED will illuminate red to indicate this.

Once recording has started, the Record Control button on the front panel of the Net-Log will light up accordingly, and a track list entry will also be created in the play screen. To stop the recording, press the “Stop” button. The Record Control button will change accordingly and the track list entry in the play screen will now contain an end-date and time.

Program Recording

To set-up a program recording you must first make sure that you have a channel enabled to do this. See the Record Format tab of the Options screen – Section 10. Once enabled, you can select the “Program” tab in the Record screen. The Program Record screen will be displayed (Fig 5-2).

This shows a time sheet for a complete week, with the seven days of the week along the left-hand side and the time of day along the top.



RECORDING

5 RECORDING



Select the record channel that you would like to program by using the left/right arrow buttons.

The time sheet works by defining a Program number and editing the start time and duration. The Program number is then assigned to any of the days by selecting the associated tick-box. Up to 20 Program numbers can be defined.

A graphical representation of the program is displayed.

Note that if you alter a start-time or duration once programmed, the graphic display will alter also to reflect the changes.

RECORDING

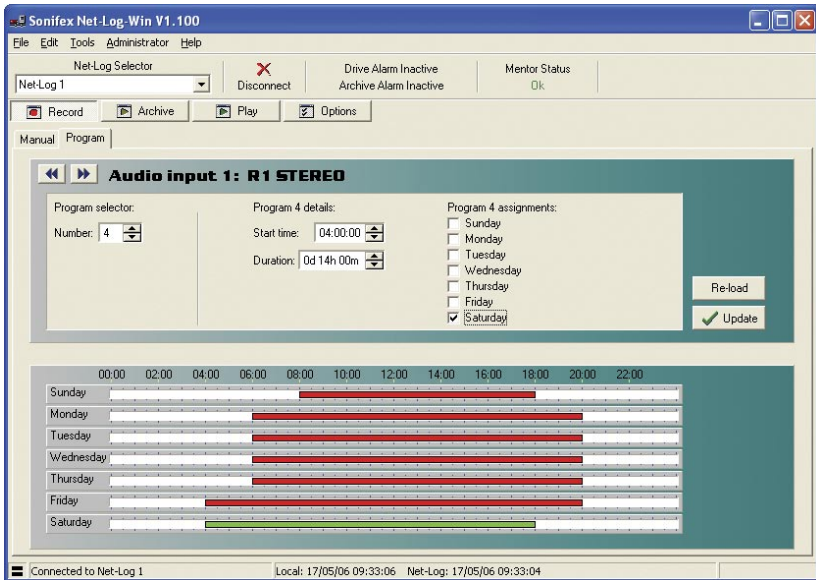


Fig 5-2: Program Record Screen.

Additional options are available to assist with setting up the record programs. These options are accessed by pressing the right mouse button whilst the cursor is positioned over the record program screen. A popup menu will be displayed as shown in Fig 5-3. The first two options allows you to quickly assign the currently selected program to either run every day or not run on any day. The next three options can be used to clear programs. Clearing a program resets the start time and duration to defaults and removes all the day assignments. The last two options allow you to make copies of programs.

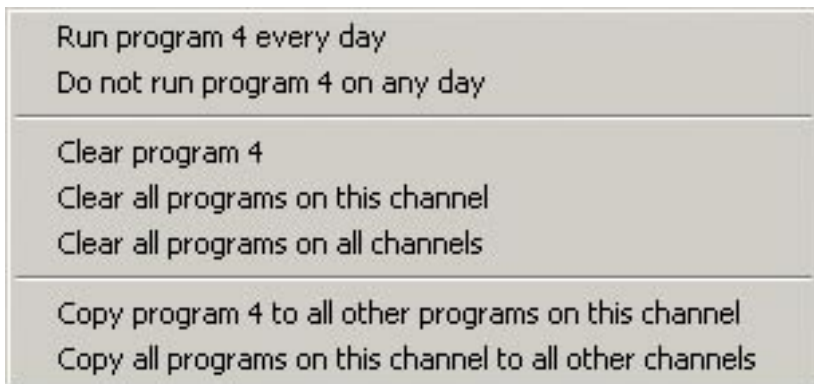


Fig 5-3: Program Record Popup Menu Commands.

Click on the “Update” button to send the program to the Net-Log. The record start and stop times are stored on the Net-Log and recording will now start and stop automatically. Storing the information on the Net-Log allows the recording to be made even if there is a network problem at the time the recording state is due to change, and allows everyone to see the record programs being used.

If you need to change the program times for a particular Net-Log, or just want to view them, the display will be refreshed automatically when you select the Net-Log, or you can press the “Re-load” button, which gets the information from the connected Net-Log.

If you make alterations in this screen and wish to cancel them, then simply leave this screen, or press the “Re-load” button to show the existing settings.

Note: If the Net-Log is currently using a program recording, and you update it with a new program, the current state of the recording will reflect the new program state.

E.g. if the Net-Log is recording at 4pm on a Monday and a new program is loaded at that time which has a record stop at 3pm and record start at 5pm on a Monday, the recording will stop. It will then restart recording at 5pm.

Saving and Loading Record Programs

Once you have finished setting up the record programs, you can make a copy of them on a PC. This can be particularly useful if you have more than one Net-Log and you want each machine to follow the same programs.

To save the complete set of record programs for the connected Net-Log, select File, Save As from the main menu. A dialog will be displayed allowing you to specify the location and name of the file that will be used to store the current program information. Once you have made these selections, press Save.

To load a previously saved file, select File, Open and then select the file that contains the required program information.

5

RECORDING

Please note, you can only load and save programs whilst in the record program screen.

Auto Recording

To use auto recording, you must first make sure that the auto record mode has been selected, and the auto start and auto stop parameters have been set as required. See the Record Format tab of the Options screen – Section 10.

To start auto recording, press the relevant “Record Start” button. The channel display will show “Waiting for auto start level...”, and the Net-Log will start recording automatically when the input audio level rises above the auto start threshold. The on-screen LED will illuminate red to indicate when a channel has started recording.

Recording will continue until the input audio level falls below the auto stop level threshold, at which point the recording is provisionally ended. The input audio level must then remain below the stop level threshold for the period of time set by the stop duration, otherwise recording will continue.

Once a recording has ended, the length of the new cut is compared to the auto start duration. If the new cut length is less than the auto start duration, it will be automatically deleted.

The process is then repeated the next time the input audio level rises above the auto start level threshold.

To stop auto recording at any time, press the “Stop” button.



RECORDING

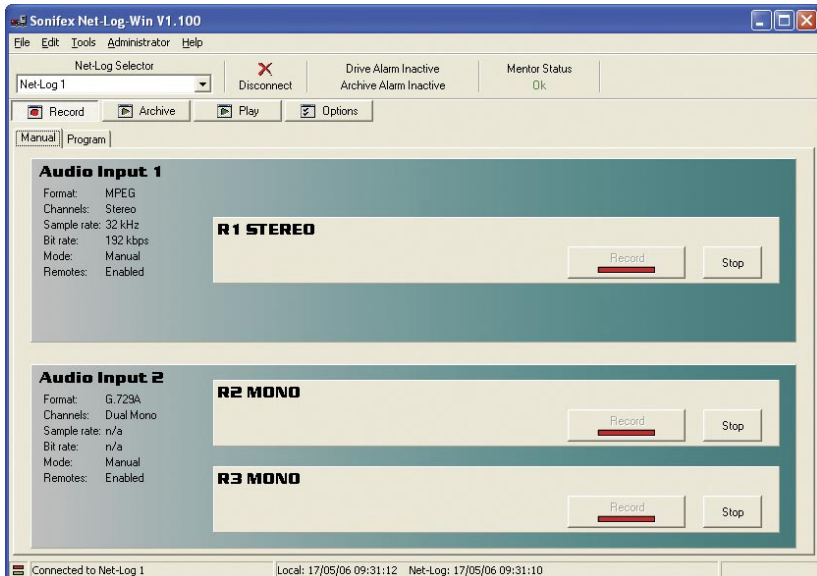
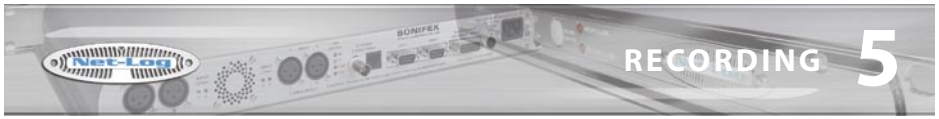


Fig 5-4: Auto Record Mode.



Remote Recording

Recording for each channel can also be started remotely using the 15 Pin D-Type socket found on the rear of the unit. There are four record input pins that can be assigned as momentary or latched in the Record Remotes Option screen.

Serial Recording

Serial Recording allows external equipment connected to the Net-Log via a serial communications link, to start/stop recordings. There are currently two interfaces supported. See chapter 9 – Serial Control Interface.

Record Tally Outputs

Each record channel has a 'Record Tally Output' that is active when the associated channel is recording. For example, if channel 1 left is currently recording, then Record Tally Output 1 will be active. Likewise if channel 4 right is also recording, then Record Tally Output 4 will be active. These outputs are independent of the record mode selected.

The Record Tally Outputs are open-collector driven, and are available using the 15 Pin D-Type connector on the rear panel of the unit.

See section 13 Technical Specification for details of all of the remote input and output pin connections.



RECORDING

6 PLAYING & DOWNLOADING

6 Playing & Downloading

Audio recorded on the Net-Log can be accessed in two ways. Firstly, you can download a selected piece of audio straight to your hard drive, and then play it either using the embedded player (Fig 6-5), or for MPEG, Linear or MP3 recordings, the Windows Media Player. G.729A recordings can only be played using the embedded player. Alternatively, you can stream audio directly from the Net-Log and listen to it whilst it plays.

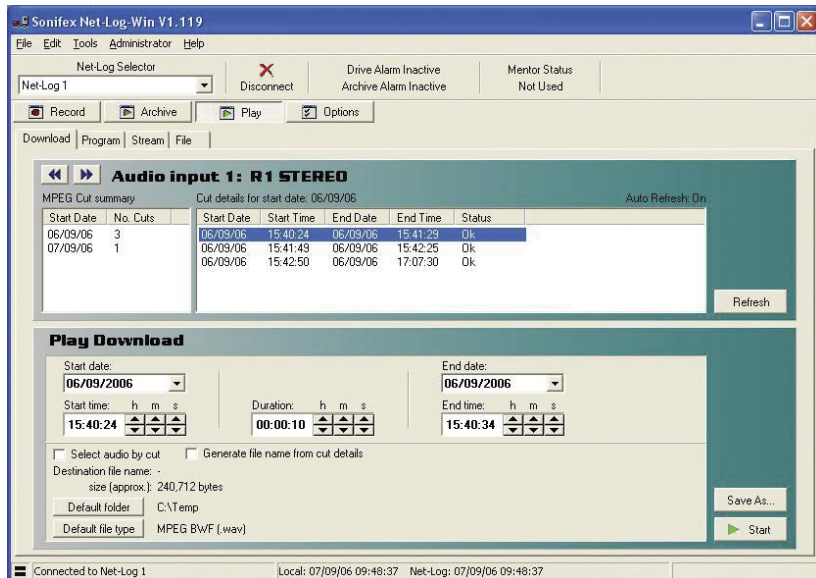


Fig 6-1: Play Download Screen.

Track List Display

The track list display is shown in Play Download, Play Stream and Play File. The Net-Log can record up to 250000 tracks per channel. To make it easier and quicker to find the required audio for playback, the recorded track display is split into two parts. The list on the left shows a summary of tracks that exist on the selected channel, indicating the start dates and number of tracks that were started on that date. Click on the required date to load the list on the right with details of each track recorded on that date. The "Refresh" button is used to refresh both lists to include any newly recorded tracks. Select the left/right arrow buttons to change the channel.

The "Cut summary" list is, by default, loaded automatically when entering the play screen, or when selecting a different channel. In addition, both lists will be updated if a new recording is initiated on Net-Log. This auto refresh feature can be disabled by selecting Tools from the main menu, and de-selecting the "Auto Refresh Cut Display" option. It is particularly useful to have this option disabled if you record a large number of tracks on a daily basis, as it prevents the lists being updated every time a new recording is made.

Play Download

Downloading can be used to get a piece of audio from the Net-Log, which can be saved as a file for playback later or for emailing/forwarding to a colleague or customer.

Select the “Download” tab to select the Play Download screen (Fig 6-1). There are two methods of selecting audio for download, by entering the start date and time and the duration of the required piece of audio, or by selecting a track and downloading it in its entirety.

To download a piece of audio by selecting the start date and time, ensure the “Select audio by cut” check box is not ticked. Then click on a track and its time and date details are automatically entered into the Download section. Alternatively, use the right mouse button to load the end time and date of the selected track. This is particularly useful for selecting audio near the end of a track.

The start time, start date and duration can be altered to get the exact piece of audio required. You can also use the end date and time controls to set the effective duration of the required audio. Highlight the hour, minute, second, day, month, or year and by using the up and down spin wheels to alter the value. Alternatively, you can enter the required value directly.

The file size is calculated as you change the duration and is displayed below the time and date selection boxes.

To download a complete track, ensure the “Select audio by cut” check box is ticked and select the track to highlight it ready for downloading. Multiple tracks can be selected by holding down the Ctrl key on the keyboard and clicking on additional tracks.

There are several file formats available for tracks recorded using the MPEG format. Press the “Default file type” button to select MPEG BWF, Raw MPEG, Linear BWF or MP3. For MP3 files, the bit rate of the target file can also be selected. Recordings made using the G.729A format cannot be converted to other formats.

Once you have made your selections for play download, press the “Start” button, and if a destination file has been selected the download will start. Otherwise you will be asked to specify a destination file and then the download will start automatically.

The file name for the download can be automatically generated by selecting the “Generate file name from cut details” check box. In this mode, the file name will be based in the start date, start time and duration of the selected piece of audio. When the “Start” button is pressed, the file is created automatically and the download will begin. To use this option, you must have a default directory selected. Press the “Default directory” button to choose the directory where the file will be placed.

For tracks recorded using the MPEG format, the file is created with either a .wav, .mp2 or .mp3 suffix depending on the file type selected. For G.729A tracks, the file extension will be .g7a (see Play File for file type description). MPEG, Linear and MP3 downloads can be played either with the embedded player (Fig 6-5), Windows Media Player or any other capable-



6 PLAYING & DOWNLOADING

software. G.729A recordings however, can only be played on the embedded player, as Windows Media Player does not support this format.

Play Program

The Play Program screen allows audio downloads to be scheduled. Each program contains details of the audio to be downloaded, the format of the downloaded file and an optional date and time when the download is to take place. Each program can specify a single download, or multiple downloads for specific days between selected dates.

Select the “Program” tab to select the Play Program screen (Fig 6-2). The upper part of the screen shows the program summary. This is a list of all pending and active programs for the selected channel. It also shows completed programs that have either not been automatically deleted, or have encountered an error. Select the left/right arrow to change the channel and refresh the program list. The “Delete All” button deletes all programs for all channels.

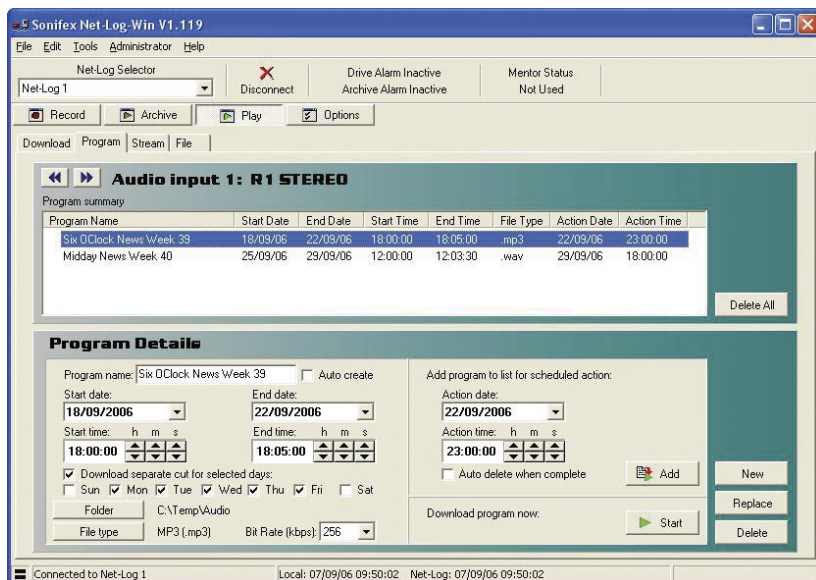


Fig 6-2: Play Program Screen.

The lower part of the Play Program screen shows the details of the selected program. Click on an existing program in the list to load the details. Use the “Delete” button to delete the highlighted program, or the “Replace” button to replace the highlighted program with the program currently shown in Program Details.

To add a new program, press the “New” button. Each program requires a name which uniquely identifies the program in the list. The name can be entered manually, or it can be created automatically by ensuring the “Auto create” check box is ticked.

To configure a program to download a single track, ensure the “Download separate cut for selected days” check box is not ticked. In this mode, the start date and time and the end date and time controls directly select the piece of audio to be downloaded.

To configure a program to download multiple tracks, tick the “Download separate cut for selected days” check box. In this mode, the start and end time controls specify the piece of audio to be downloaded. The start and end date controls specify the range of dates from which the selected piece of audio will be downloaded. The check boxes, marked “Sun” though to “Sat” allow you to select the specific days, between the start and end date, that each track will be downloaded.

For example, you want to download an audio clip that starts at 9:00am and continues to 9:30am on Monday 4th September 2006. You also want to download the same clip from the following Wednesday and Friday mornings. First you would set the start date to 04/09/2006 and the end date to 08/09/2006. Then you would set the start to 09:00:00 and the end time to 09:30:00. With the “Download separate cut for selected days” check box ticked, ensure only the required day check boxes, “Mon”, “Wed” and “Fri” are ticked.

The directory where the downloaded audio will be placed is selected by pressing the “Folder” button. When a program download starts, a sub-directory of the selected folder is created using the program name, and the file is saved to this sub-directory.

For tracks recorded using the MPEG format, the file type of the downloaded audio can be MPEG BWF, Raw MPEG, Linear BWF or MP3. Pressing the “File type” button repeatedly, cycles through the available types. For MP3 files, the bit rate of the created file can also be selected. For tracks recorded using the G.729A format, the file type is fixed.

Once your program selections have been made, you can select whether the program download is to be scheduled for completion at a later time, or started immediately. To schedule the program to run at a later time, select the required date and time using the action date and time controls. You can also select whether the program is automatically deleted once it has completed by ticking the “Auto delete when complete” check box. If you select this option, the program will not be deleted from the list if an error occurs during the download. Press the “Add” button to add the program to the list. To execute the program immediately, press the “Start” button. In this mode, the program will be added to the list temporarily while download is completed. Once complete, the program will be removed from the list provided no errors occurred during download.

A small green tick will appear next to the program name for programs that have successfully completed. A yellow triangle with an exclamation mark indicates programs that have encountered an error. An hour glass next to a program in the list indicates that the program is currently active. By default, the progress of play programs is logged to a file on the PC. See section 12 Tools for details of the play program log.



6 PLAYING & DOWNLOADING



PLAYING & DOWNLOADING

Play Stream

Select the “Stream” tab to select the Play Stream screen (Fig 6-3). Select the left/right arrow to change the channel. Only one mono or stereo channel can be played at any one time. Select the track that contains the piece of audio that you want to stream.

The start time will be entered in the Stream section of the display. Alter the time and date of the track to the time and date of the recording that you wish to hear.

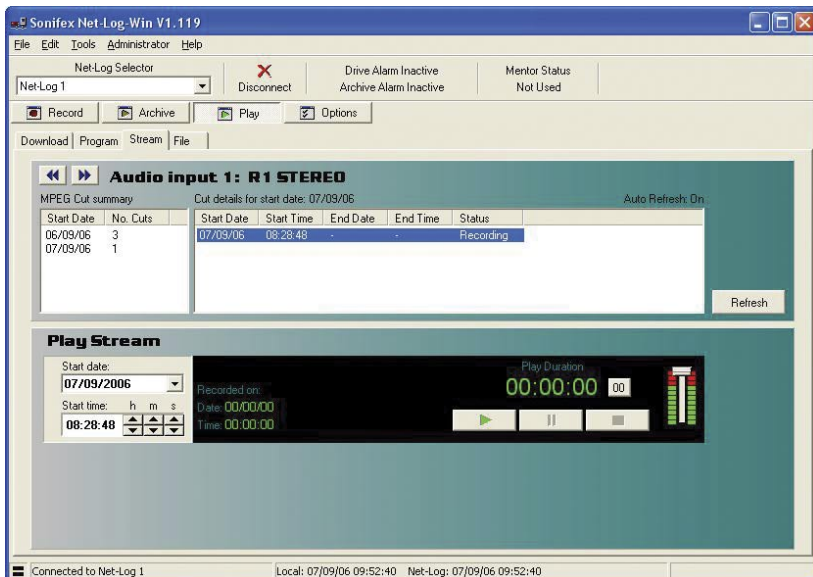


Fig 6-3: Play Stream Screen.

Press the “Play” button to hear the audio. It will take a few seconds to access the audio from the Net-Log and to stream it across your network. The Recorded Time and Recorded Date are displayed during playback. You can use the “Pause” and “Stop” buttons to pause and stop the audio respectively. Pressing the “Stop” button will recue the audio back to the “Play from ...” time and date. The slider on the right can be used to alter the volume of playback and the “00” button is used to reset the “Play Duration” counter.

There is a minimum delay for playing audio from a currently recording track. If the selected play time is within this minimum time, a message box will be displayed allowing play to automatically start playing once sufficient audio data exists. See Fig 6-4 for details of the minimum play stream delays.

Sample Rate	Minimum Delay Times for Play Stream on Currently Recording Track
16 kHz	115 seconds
22.05 kHz	85 seconds
24 kHz	79 seconds
32 kHz	60 seconds
44.1 kHz	45 seconds
48 kHz	42 seconds

Fig 6-4: Minimum Play Stream Delays.

Play File

Select the “File” tab. The Play File screen shown in Fig 6-5 is for playing archived or downloaded files. The screen layout is similar to the Play live screen.

The Play File screen is split into two parts; play control and the play list. Audio files are loaded into the play list by pressing the “Open...” button, and selecting the required file(s). Audio files of all supported formats can be loaded into the play list. Single entries in the play list can be deleted by highlighting the entry and pressing the “Delete” button. Alternatively, the whole play list can be cleared by pressing the “Clear” button.

Fig 6-5: Play File Screen.

6

PLAYING & DOWNLOADING



PLAYING & DOWNLOADING

To play the current play list, press the green “Play” button. Play starts at the entry highlighted in the play list and continues to the end of the list. There are other controls including next/previous track select, seek, pause and stop with an extra control for altering the playback speed of the file. This is situated alongside the volume control. The volume control is equivalent to the Wave Output volume control on the Windows Mixer, usually situated in the Windows System Tray.

When an MPEG file is archived or downloaded from the Net-Log, the file can be created as either a raw mpeg data file (.mp2), or as a broadcast wave format file (.wav). Creating a broadcast wave format (bwf) file allows additional information about the recording to be stored and recalled on playback. Creating an mp2 file doesn’t allow this information to be recorded. G.729A files are created with this additional information automatically included.

The MPEG bwf and G.729A recordings contain information specific to the file, including the recording format of the file, the origination time of the file, the MAC Address of the Net-Log that it was recorded on and the name of the recording, etc. The origination time and date of the file, together with the file name and file duration, are displayed when the corresponding entry in the play list is selected or played.

7 Archiving

The Archiving Process

Archiving is the process of getting Net-Log to automatically and continuously create audio files (.wav, .mp2 or .g7a files) on a selected drive or device. Long recordings can be reformatted into smaller files of a fixed duration for ease of use.

Typically, this is so that a long-term archive of recorded material can be stored on a separate hard-drive, such as on a server, where many people can access historic files without interfering with the operation of the Net-Log. Additionally, the server could then be used to make permanent archives on to CD-R, DAT, or DVD-R, using conventional low-cost IT technology.

Configuring Archival To A Networked PC

Enter the Options screen and select the “Archive” tab (Fig 7-1). To configure the options correctly you need to know the IP Address of the networked PC and the designated share name of the folder to which you want to archive to. You must also have write access to this folder.



ARCHIVING

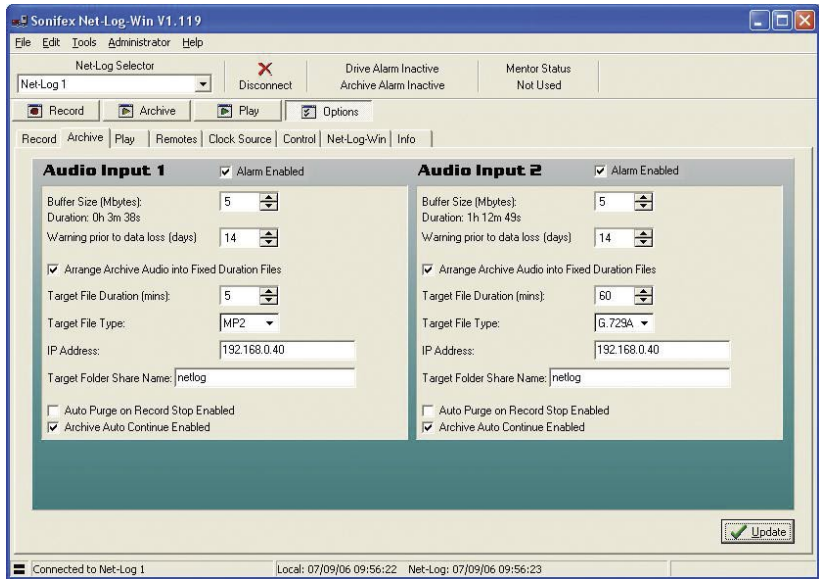


Fig 7-1: Archive Options Screen.

Archiving is configured for individual recording channels, or pairs of channels, depending on the recording options settings. For each channel, the following settings should be configured:

7 ARCHIVING

Alarm Enabled

This option allows you to disable the archive warnings and alarms. It is primarily for users who don't wish to use Archiving and therefore don't want the distraction of having the archive warnings and alarms activating when data is overwritten.

Buffer Size

The buffer size (5-1000Mbytes for MPEG, 1-200Mbytes for G.729A) is the amount of un-archived data stored on the Net-Log before archiving will start. If you set the buffer to 150MB, the Net-Log waits until it has that much data before it archives to the selected destination. The size of the buffer you select is really dependent on network activity. If your network is quite busy you might want to set the buffer at a relatively low size (5-50MB).

Warn Time

In normal operation, the Net-Log records continually, overwriting information initially recorded on the drive when it reaches the end. The warn time is the amount of time prior to data loss on the Net-Log (5 mins to 14 days) and provides a warning that data will soon be overwritten which has not been archived. Once data is overwritten, the archive alarm will activate. Please note that if you have a busy network you should set this time quite high to give enough time to archive the data. This option has no effect if the Alarm Enabled option is disabled.

Arrange Archive Audio into Fixed Duration Files

When this box is ticked, the audio transferred from the Net-Log to the archive destination drive will be split into fixed length files, determined by the Target File Duration option. Without this option enabled, the audio files will appear on the archive destination drive as they do on the Net-Log.

Target File Duration

This is the duration (5 – 60mins) of the files that will be created on the destination drive. For example, if it is set to 5 minutes then the files on the target drive or device will be of a five-minute duration. This option is only valid when the "Arrange Archive Audio into Fixed Duration Files" box is ticked.

File Type

This determines the type of file that is created (.wav, .mp2 or .g7a).

Destination IP Address

This is the IP Address of the PC on the network that you want to archive to.

Target Folder Share Name

This should be set to the share name of the folder where you want the archives to be stored at the destination IP Address. Only the share name should be entered, not the path of the shared folder. To find the share name, locate the target folder in Windows Explorer, then right click on this folder and select "Sharing" from the popup menu. When the archive begins, sub-folders will be created automatically.

Auto Purge on Record Stop Enabled

When this box is ticked, all available audio is archived each time a recording is ended.



Once you are happy with the settings, press the “Update” button, and they will be written to the Net-Log shown in the Net-Log selector.

Format of Archived Files

The archived files are stored in sub-directories beneath the directory name that you have defined. The format is (depending on the selected file type):

\\IP Address\Service Name\dd-mm-yyyy\hh-mm-ss.wav

or

\\IP Address\Service Name\dd-mm-yyyy\hh-mm-ss.mp2

or

\\IP Address\Service Name\dd-mm-yyyy\hh-mm-ss.g7a

Where IP Address is the Net-Log’s IP Address, Service Name is that defined in the Service Name tab of the Options, dd-mm-yyyy represents the date of the recording in day-month-year format and hh-mm-ss is the start time of the recording in hours-minutes-seconds format.

Beginning to Archive

To start archiving, select the Archive screen and press the “Archive Start” button (Fig 7-2) for the particular channels that you wish to archive. The LED in the button will illuminate when data is being archived (i.e. transferred from Net-Log to the PC).

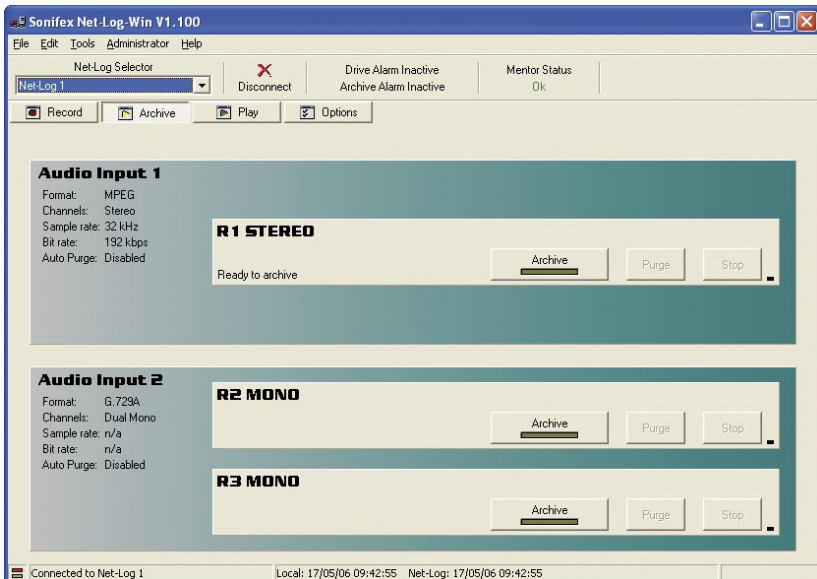


Fig 7-2: Archive Screen.



7

ARCHIVING



If you want to stop the archive process, simply select the “Stop” button.

Note: You can only archive audio data from the Net-Log that you are currently logged on to. If you disconnect, all archiving will stop. See section 8 – Auto archive, for details of how to archive data from one or more Net-Logs simultaneously and without having to logon/logoff.

ARCHIVING

8 Auto-Archive

Introduction

Net-Log Auto-Archive is a utility designed to improve the usability of the 'Archive' function of Net-Log.

Using Net-Log-Win to archive material from a Net-Log unit to a PC/Server requires a user to manually log-on to the Net-Log, initiate archiving and remain logged-on for the duration of the archive process. Whilst this is satisfactory for most set-ups with one Net-Log unit, a more automated solution is required for installations of two or more Net-Log units. Net-Log Auto-Archive can be used with up to twenty Net-Logs simultaneously, automatically logging-in, archiving the available material and logging-out.



AUTO-ARCHIVE

Net-Log List	1	2	3	4	5	6	7	8
Net-Log 01	No Drive Alarm	No Cut Change	No Program Change	No Config Change	Logged In	Identity		
Net-Log 02 (user10)	Record Active	No Archive Active	No Archive Enabled	No Auto Purge	No Archive Warn	Archive Pending	No Archive Alarm	
Net-Log 03 (user10)	Record Active	No Archive Active	No Archive Enabled	No Auto Purge	No Archive Warn	Archive Pending	No Archive Alarm	
Net-Log 04 (user10)	Record Active	No Archive Active	No Archive Enabled	No Auto Purge	No Archive Warn	Archive Pending	No Archive Alarm	
Net-Log 05 (user10)	Record Active	No Archive Active	No Archive Enabled	No Auto Purge	No Archive Warn	Archive Pending	No Archive Alarm	
Net-Log 06 (user10)	Record Active	No Archive Active	No Archive Enabled	No Auto Purge	No Archive Warn	Archive Pending	No Archive Alarm	
Net-Log 07 (user10)	Record Active	No Archive Active	No Archive Enabled	No Auto Purge	No Archive Warn	Archive Pending	No Archive Alarm	
Net-Log 08 (user10)	Record Active	No Archive Active	No Archive Enabled	No Auto Purge	No Archive Warn	Archive Pending	No Archive Alarm	
Net-Log 09	No Drive Alarm	No Cut Change	No Program Change	No Config Change	Logged In	Identity		
Net-Log 10 (user10)	Record Active	No Archive Active	Archive Enabled	Auto Purge	No Archive Warn	Archive Pending	No Archive Alarm	
Net-Log 01	Record Active	No Archive Active	Archive Enabled	Auto Purge	No Archive Warn	Archive Pending	No Archive Alarm	
Net-Log 02	Record Active	No Archive Active	Archive Enabled	Auto Purge	No Archive Warn	Archive Pending	No Archive Alarm	
Net-Log 03	Record Active	No Archive Active	Archive Enabled	Auto Purge	No Archive Warn	Archive Pending	No Archive Alarm	
Net-Log 04	Record Active	No Archive Active	Archive Enabled	Auto Purge	No Archive Warn	Archive Pending	No Archive Alarm	
Net-Log 05	Record Active	No Archive Active	Archive Enabled	Auto Purge	No Archive Warn	Archive Pending	No Archive Alarm	
Net-Log 06	Record Active	No Archive Active	Archive Enabled	Auto Purge	No Archive Warn	Archive Pending	No Archive Alarm	
Net-Log 07	Record Active	No Archive Active	Archive Enabled	Auto Purge	No Archive Warn	Archive Pending	No Archive Alarm	
Net-Log 08	Record Active	No Archive Active	Archive Enabled	Auto Purge	No Archive Warn	Archive Pending	No Archive Alarm	
Net-Log 09	Record Active	No Archive Active	Archive Enabled	Auto Purge	No Archive Warn	Archive Pending	No Archive Alarm	
Net-Log 10	Record Active	No Archive Active	Archive Enabled	Auto Purge	No Archive Warn	Archive Pending	No Archive Alarm	
Net-Log 01	Record Active	No Archive Active	Archive Enabled	Auto Purge	No Archive Warn	Archive Pending	No Archive Alarm	
Net-Log 02	Record Active	No Archive Active	Archive Enabled	Auto Purge	No Archive Warn	Archive Pending	No Archive Alarm	
Net-Log 03	Record Active	No Archive Active	Archive Enabled	Auto Purge	No Archive Warn	Archive Pending	No Archive Alarm	
Net-Log 04	Record Active	No Archive Active	Archive Enabled	Auto Purge	No Archive Warn	Archive Pending	No Archive Alarm	
Net-Log 05	Record Active	No Archive Active	Archive Enabled	Auto Purge	No Archive Warn	Archive Pending	No Archive Alarm	
Net-Log 06	Record Active	No Archive Active	Archive Enabled	Auto Purge	No Archive Warn	Archive Pending	No Archive Alarm	
Net-Log 07	Record Active	No Archive Active	Archive Enabled	Auto Purge	No Archive Warn	Archive Pending	No Archive Alarm	
Net-Log 08	Record Active	No Archive Active	Archive Enabled	Auto Purge	No Archive Warn	Archive Pending	No Archive Alarm	
Net-Log 09	Record Active	No Archive Active	Archive Enabled	Auto Purge	No Archive Warn	Archive Pending	No Archive Alarm	
Net-Log 10	Record Active	No Archive Active	Archive Enabled	Auto Purge	No Archive Warn	Archive Pending	No Archive Alarm	

Fig 8-1: The Status Screen.

Licensing

When connecting to a Net-Log unit, an available stream license is required to perform the archiving process.

Using Net-Log-Win, it is suggested that a user (such as User20) is defined as having 'Archive Control' and 'Record Control', but no 'Play Control'. Auto-Archive will then only use one stream license when connected to a Net-Log unit.

When Auto-Archive logs on to the Net-Log, it uses one of the user accounts to do this. See “The Settings Screen” later in this chapter for information on defining the User Name used for auto archiving.

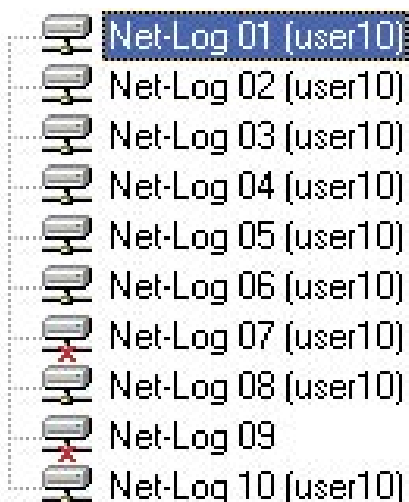


Fig 8-2: The Net-Log List.

The Net-Log List

The Net-Log Auto-Archive screen displays the defined list of Net-Log units down the left side. When a particular unit has been logged-on, the User Name is displayed in brackets. See Fig 8-2. This list can be edited by selecting Tools from the main menu, and then selecting Settings.

The Status Bar

The status bar has transmit (Tx) and receive (Rx) indicators, which can be viewed to confirm the connection to the selected Net-Log.

Performance

Please note that the performance of Auto-Archive depends upon the network and PC architecture, number of Net-Log units and the bit rate of the archives being created.

System Set-up

Net-Log units are equipped with 10mb/s network interfaces that should be connected directly to a 10/100 or 10/100/1000 capable Ethernet switch. The archiving PC/server should be fitted with at least a 100mb/s network interface. If possible use a 1000mb/s network interface, especially if multiple Net-Logs are being archived with high bit rates (e.g. 384kb/s stereo, or 192kb/s mono).

Starting The Archive

Before the archive process can begin, the Auto-Archive utility has to Login to the Net-Log(s). This is achieved in one of two ways. To manually connect to a Net-Log, right click on the Net-Log name on the left side on the screen and then select Connect. Once a connection has been established, and the archive rights of the account used to logon to the Net-Log has been confirmed, archiving can begin. Auto-Archive will then stay connected to the Net-Log until it is manually disconnected. To do this, right click on the Net-Log name and select Disconnect. For a more automated setup, Auto-Archive can be set to automatically Login to the configured Net-Logs, check for and archive outstanding audio, and then Logout. See the Auto Login/Logout option in the Device List later in this chapter for details.

The Settings Screen

To access the Settings screen, select Tools from the main menu, and then select Settings. The screen shown in Fig 8-3 will be displayed.

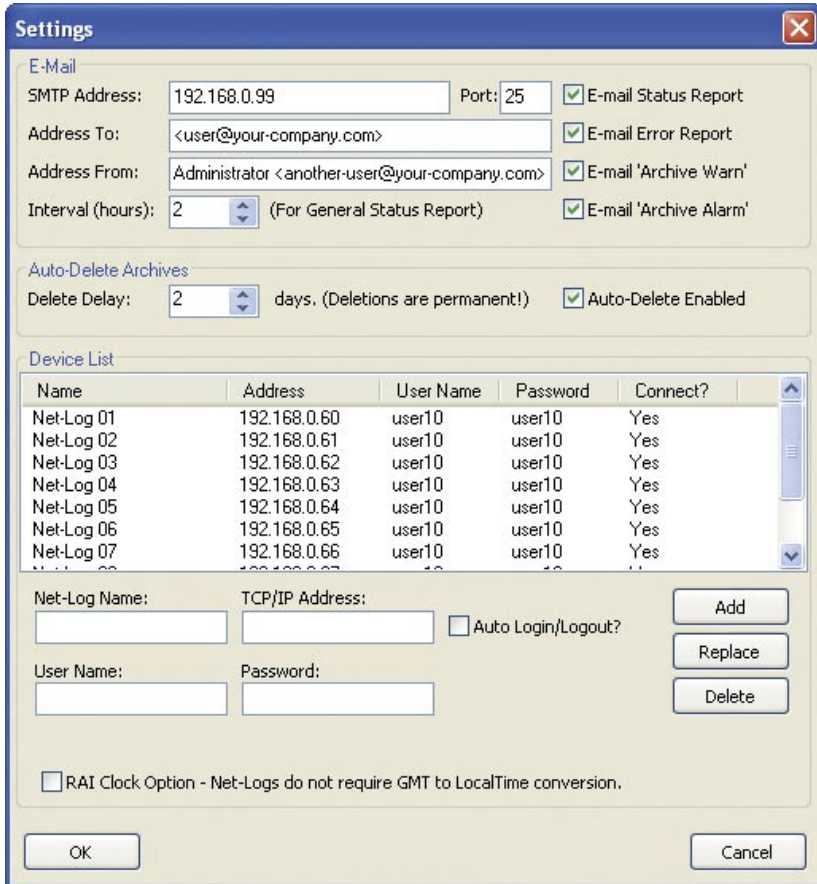


Fig 8-3: The Settings Screen.

E-Mail

These options are used to configure the sending of the e-mailed status reports.

- SMTP Address – TCP/IP address of your e-mail server.
- Port – TCP/IP port for SMTP (usually '25')
- Address To – E-mail address of recipient. Must contain only one address and in the format: user@your-company.com (including '<' and '>')



- Address From – E-mail address of sender in the format: user@your-company.com (including '<' and '>'). This can be useful when multiple copies of Net-Log Auto-Archive are in use.
- Interval – Interval (in hours) between sending of Status Reports. Suggest setting this between '6' and '24' hours.
- E-mail Status Report – option to send/not send Status Reports.
- E-mail Error Report – option to send/not send Error Reports.
- E-mail 'Archive Warn' – option to send/not send 'Archive Warn' reports.
- E-mail 'Archive Alarm' – option to send/not send 'Archive Alarm' reports.

See later in this chapter for a description of these reports.

Auto-Delete Archives

If Auto-Delete is enabled, previously archived material will be deleted after the specified number of days.

Device List

Define your list of Net-Log units using the 'Add', 'Replace', and 'Delete' buttons. To fully automate the archive process, select the Auto Login/Logout checkbox to allow Auto-Archive to automatically login to each configured Net-Log at regular intervals and archive outstanding audio. This option must be set individually for all required Net-Logs.

To enable successful archiving on each Net-Log, be sure to use the User Name and password that has 'Archive Control' rights.

When connecting to a Net-Log unit, an available stream license is required to perform the archiving process.

Using Net-Log-Win, it is suggested that a user (such as User20) is defined as just having 'Archive Control' and no 'Play Control', and this user used by Net-Log Auto-Archive.

See chapter 11 for more information on licensing and users and rights.

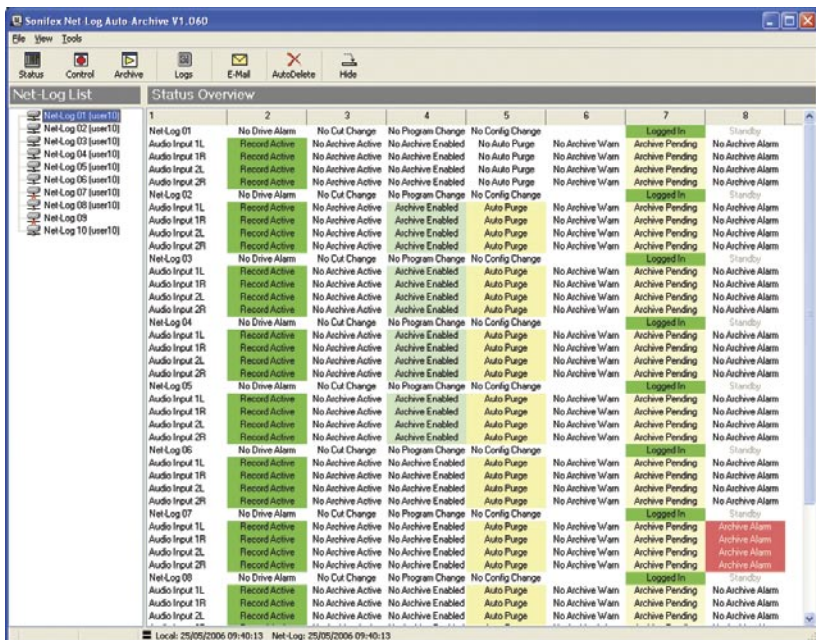
The Status Screen

The Status screen displays the current known status of each defined Net-Log unit.

See Fig 8-4.



To view the Status Screen, press the 'Status' button on the toolbar.



AUTO-ARCHIVE

Fig 8-4: The Status Screen.

If auto-login and/or auto-logout are enabled, this screen also shows the login and log-out countdown timers for each Net-Log unit.

The Control Screen

The Control Screen can be used to start and stop recordings, and also start and stop the archive process on each of the designated Net-Log units. See Fig 8-5.

Archive LED states:

- Flashing Yellow : Archive Pending
- Steady Yellow : Archive Active
- Flashing Red : Archive Warn
- Steady Red : Archive Alarm
- Off : No Archive Pending



To view the Control Screen, press the 'Control' button on the toolbar.

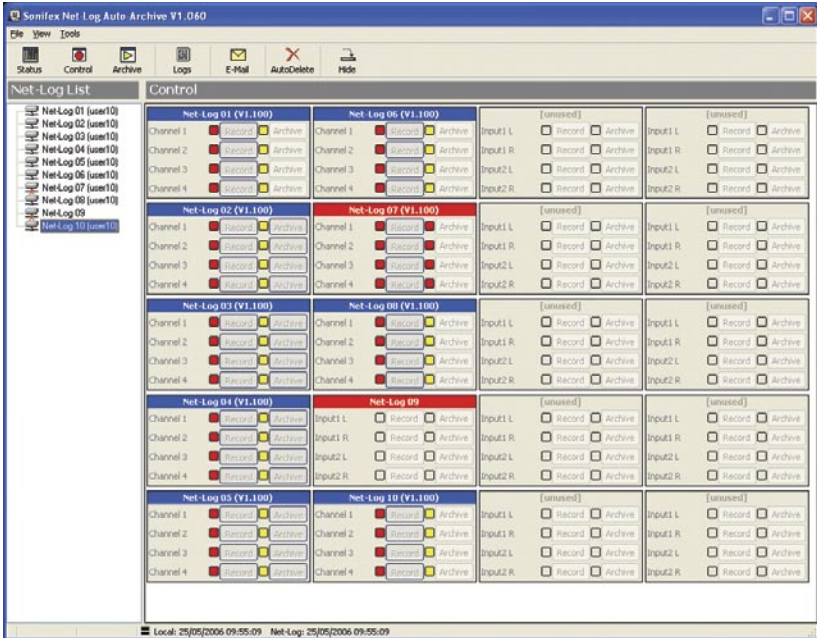


Fig 8-5: The Control Screen.

The Archive Screen

The Archive Screen can also be used to control the archive process of the currently selected Net-Log. See Fig 8-6.

This screen also shows record parameters, archive settings and displays the filenames of archives currently being written to disk. See Chapter 7 on the use of the Archiving settings.



Archive

To view the Archive Screen, press the 'Archive' button on the toolbar.

The Event Log Screen

The Event Log Screen lists noteworthy events in chronological order. See Fig 8-7.

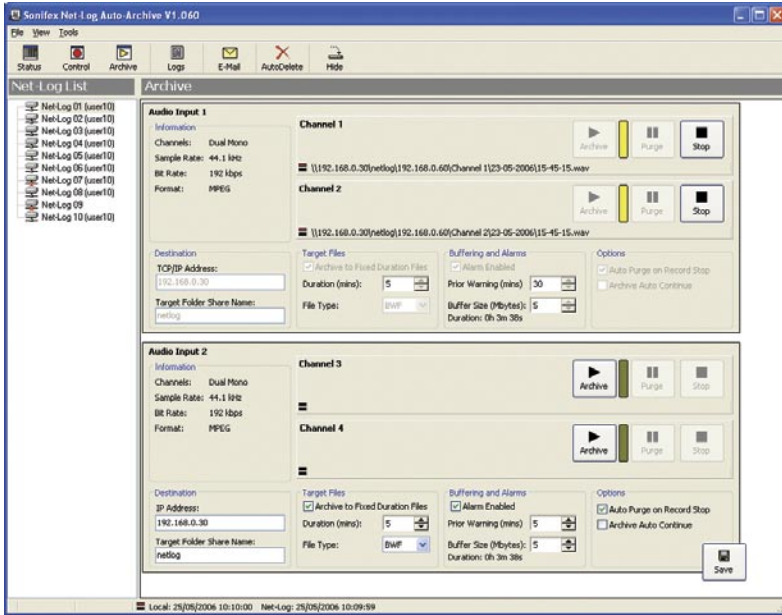
Such events include:

- connections/disconnections with Net-Log units
- important information regarding failure to properly archive material
- confirmation of sent email reports



Logs

To view the Event Log Screen, press the 'Log' button on the toolbar.



AUTO-ARCHIVE

Fig 8-6: The Archive Screen.

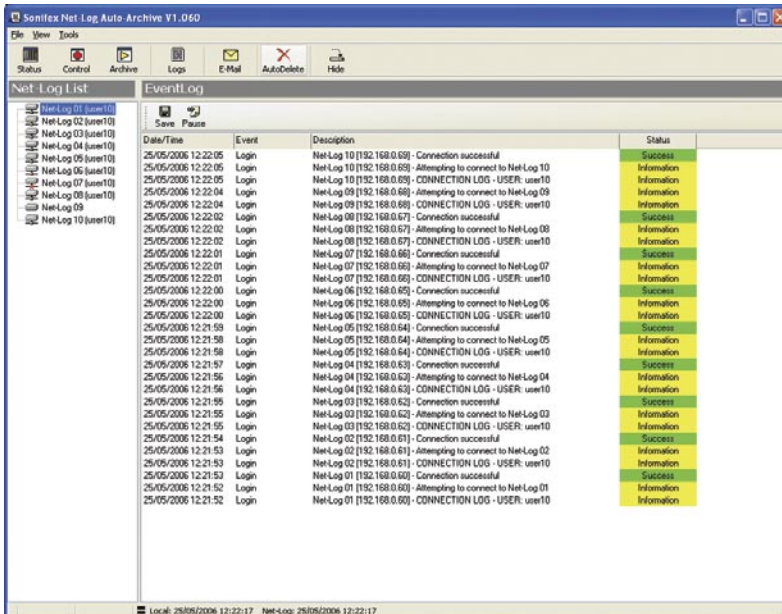


Fig 8-7: The Event Log Screen.

Reports

There are four types of e-mailed reports available from Net-Log Auto-Archive.

Status Report

The general Status Report includes information regarding the known current state of all defined Net-Log units, including Login/logout timings and audio input status.



This report can be generated manually by pressing the 'E-Mail' report button on the toolbar.

Error Report

Error reports are generated when a communication error has occurred with a single Net-Log unit. The error type will be included within the report. Whilst some of these errors will be critical (such as 'Connection Error'), some are not (such as 'User Unavailable')

Possible Errors

- 'Invalid User Name' – User Name is not recognised by Net-Log unit. Check Options.
- 'Invalid Password' – password is not recognised by Net-Log unit. Check Options.
- 'User Unavailable' – user is already logged-in. Check connected users with Net-Log-Win.
- 'No/Bad Response' – connection broken. Check network cabling.
- 'No Valid Licenses' – Net-Log has not been licensed. Use Net-Log-Win to issue a license.
- 'Valid licenses in use' – all licenses are in use.
- 'Connection Error' – unable to connect to Net-Log. Check network cabling.
- 'No Disk Space!' – archive target has no useable space remaining. Change archive destination or make some space available.

Archive Warn Report

'Archive Warn' reports are generated when a Net-Log input channel is about to overwrite material that has not yet been archived. This usually happens when the input channel has not been 'Archive Enabled'.

Archive Alarm Report

'Archive Alarm' reports are generated when a Net-Log input channel is overwriting material that has not been archived. This usually happens when the input channel has not been 'Archive Enabled'.



9 Serial Control Interface

The Serial Control Interface allows external equipment to remotely control several functions of the Net-Log. Each of the available interface protocols have been designed according to customers’ specific requirements. Additional interface options may be added in the future; please contact Sonifex Ltd for further details.

To enable the Serial Control Interface, enter the Options screen and select the “Control” tab (Fig 9-1). From the drop down list, select the required Control Interface type. If the drop down list is disabled, this means the firmware in the connected Net-Log has not got the Serial Control Interface enabled, or a later version of firmware is required.



SERIAL CONTROL INTERFACE

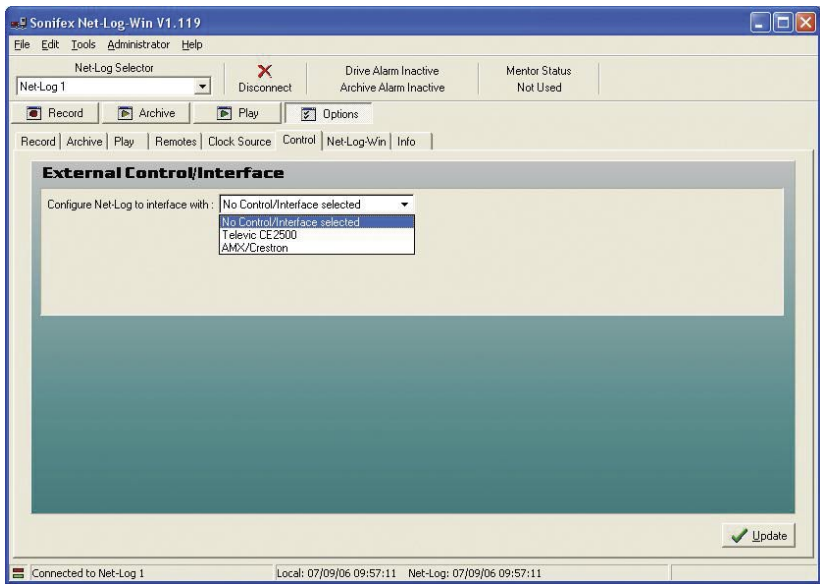


Fig 9-1: Control Options Screen.

The Interface types currently available are:

- Televic CE2500
- AMX/Crestron

When a Control Interface type is selected from the list, the available settings for that type will then be displayed.



Televic CE2500 Interface

The Televic CE2500 is the central control unit of Televic's Digital Conference and Interpretation System. This interface provides automatic record start when the Conference Systems' microphones are activated. The recording is then stopped when the microphone is deactivated. The Net-Log also extracts the microphone number and the name of the speaker from the microphone activation command and stores this information on the internal hard disk along with the normal cut information. This additional data is then displayed in the Play screens cut list. The Net-Log can currently support up to 128 microphones.

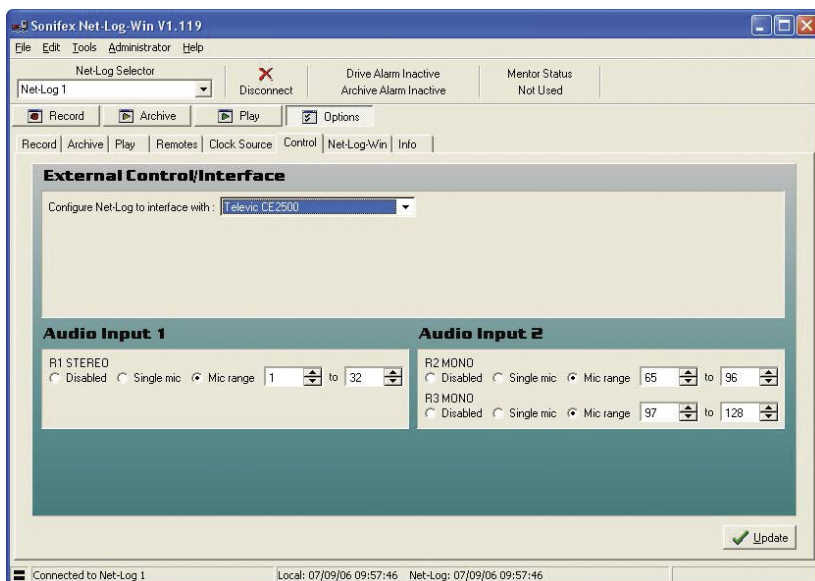


Fig 9-2: Televic CE2500 Interface Options.

The settings relating to this interface allow the available record channels to be associated with specific microphone numbers. Each channel is displayed according to the Record option settings. In Fig 9-2, Audio Input 1 is configured as stereo and Audio Input 2 is configured as dual mono. Each available channel is identified by the service name also given in the Record options.

Note: Only one microphone number and name can be stored per recording, so the last one used is stored.

Each channel can be configured in one of three modes:

Disabled

When this option is selected, the channel will not be controlled by any of the microphones on the Conference System.

Single Mic

This selection configures the associated channel to be controlled by a single microphone. The microphone's identification number can be entered in the edit box. Alternatively use the up/down arrows to select the required identification number. The lowest microphone number is 1 and the highest is 128.

Mic Range

This selection configures the associated channel to be controlled by a range of microphones. Activating any one of the microphones in the specified range will start the channel recording. The channel will only then stop recording when all microphones in the range have been deactivated. Again the lowest microphone number is 1 and the highest is 128.

The settings for Single mic and Mic range can overlap such that a microphone can control multiple record channels.

Once the required settings have been entered, press the "Update" button, and they will be written to the Net-Log shown in the Net-Log selector.

The cut list display in the Play screen in Net-Log-Win will now show two additional columns: Mic and Name (see Fig 9-3). These new columns display the Mic number and the Name of the speaker who initiated the recording.

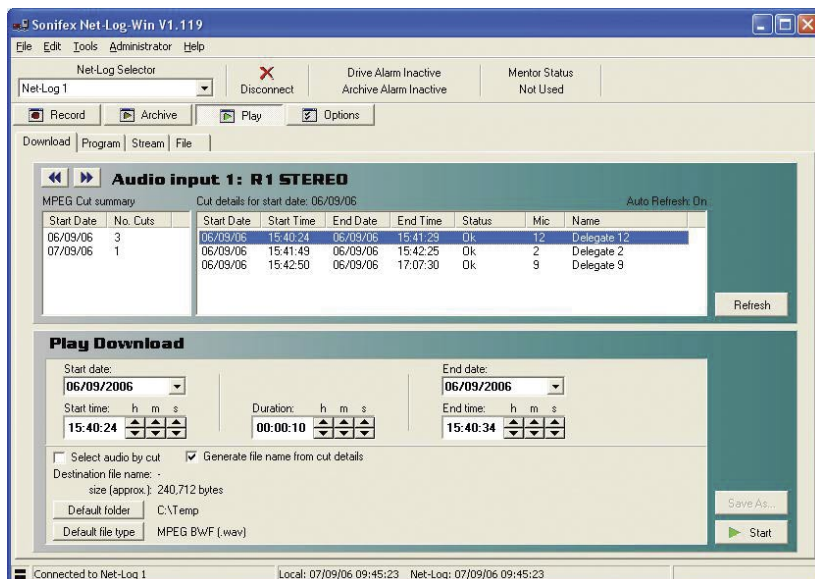


Fig 9-3: Additional Play Cut List Columns.



When the Net-Log is powered up with the Televic CE2500 Interface selected, it waits to receive a synchronisation command from the CE2500 before it will execute any further commands. This is to ensure that if any of the microphones are currently activated, and have been previously associated with a record channel, recording is started on the relevant channel. The synchronisation commands are issued by the CE2500 every 5 seconds.

If an attempt is made to stop recording manually in Net-Log-Win on a channel that is associated with an active microphone, a warning message will be displayed in Net-Log-Win.

An alternative method of controlling the recording can be used when using the Televic CE2500 Interface. This is done by utilising the closing contact controlled by the AOP2500 Analog Output device. This contact is closed when any of the microphones is activated and remains closed until all microphones are deactivated.

By setting all available microphone options to “Disabled” in the Control Options screen, serial control of record start and stop is disabled. Note that the microphone number and name are still recorded in this mode, but because only one closing contact can be used by the AOP2500, only one channel can be recorded, so the microphone number and name are appended to the last recording.

The closing contact on the AOP2500 can then be used to control the remote inputs on Net-Log. See “Record Remotes” in Section 10 for more details on setting up the remote inputs and Section 13 for the pin descriptions of the remote connector.

Televic CE2500 Protocol

The serial settings on Net-Log for the Televic CE2500 interface are as follows:

Serial port:	COM2
Baud rate:	19200
Data bits:	8
Stop bits:	1
Parity:	none
Flow control:	none

The Net-Log responds to 7 of the serial commands issued by the CE2500 unit. These commands share a common structure:

STX ID DATA CRC ETX

where:

STX is the start transmit character '%' (0x25)

ID is a single character which identifies the command

DATA is text associated with the command

CRC is the 16 bit sum of the ASCII chars STX, ID & Data

ETX is the end transmit character (0x0D)

Examples of the 7 commands are as follows:

System Synchronisation

```
"%S0001000201D6\r"
```

"%" is the start of transmit character (0x25)

"S" indicates command type

"00010002" indicates that mics 1 and 2 are active (0000 for no mics active)

"01D6" is the 16 bit CRC

"\r" is the end of transmit character (0x0D)

President Microphone Activation

```
"%P0001Mr John Smith05A4\r"
```

"%" is the start of transmit character (0x25)

"P" indicates command type

"0001" indicates the microphone number

"Mr John Smith" is the speakers name

"05A4" is the 16 bit CRC

"\r" is the end of transmit character (0x0D)

President Microphone Deactivation

```
"%p00010131\r"
```

"%" is the start of transmit character (0x25)

"p" indicates command type

"0001" indicates the microphone number

"0131" is the 16 bit CRC

"\r" is the end of transmit character (0x0D)

Delegate Microphone Activation

```
"%M0002Mr Joe Bloggs058D\r"
```

"%" is the start of transmit character (0x25)

"M" indicates command type

"0002" indicates the microphone number

"Mr Joe Bloggs" is the speakers name

"058D" is the 16 bit CRC

"\r" is the end of transmit character (0x0D)





Delegate Microphone Deactivation

```
"%m0002012F\r"
```

"%" is the start of transmit character (0x25)

"m" indicates command type

"0002" indicates the microphone number

"012F" is the 16 bit CRC

"\r" is the end of transmit character (0x0D)

Deactivate All Microphones

```
"%V00000116F\r"
```

"%" is the start of transmit character (0x25)

"V" indicates command type

"0000" indicates no mics active

"0116" is the 16 bit CRC

"\r" is the end of transmit character (0x0D)

System Reset (Deactivate All Microphones)

```
"%R0052\r"
```

"%" is the start of transmit character (0x25)

"R" indicates command type

"0052" is the 16 bit CRC

"\r" is the end of transmit character (0x0D)

AMX/Crestron Interface

The AMX/Crestron interface provides simple record control and monitoring for the AMX/Crestron range of Control Panels. These control panels provide a flexible user interface that can be used in addition to the client PCs running Net-Log-Win.

There are no additional configuration options for this interface type. The COM port settings and the protocol commands are fixed.

AMX/Crestron Protocol

The serial settings on Net-Log for the AMX/Crestron interface are as follows:

Serial port: COM2. The serial control interface is implemented on COM2 on Net-Log. Net-Util usually uses COM1 on Net-Log, but when used in Crestron emulation mode, COM2 must be used.

Baud rate: 19200

Data bits: 8

Stop bits: 1

Parity: none

Flow control: none

Operational Note: Flow control is not used. However the Net-Log does assert RTS whenever it has valid characters to transmit. The Net-Util program in Crestron emulation mode asserts RTS all the time. Using Net-Util with the RTS line disabled still works correctly. DCD and DTS are not used. The Net-Log constantly monitors the serial port looking for predefined control characters which signify that a valid command has been received. This control character is set to 0xD (13 decimal) which is the Carriage Return character in ASCII. All data received is buffered internally until this character is received at which point the buffer is closed and validated.

The Net-Log recognises 5 serial commands issued by the AMX/Crestron Control Panel. These commands share a common structure as shown:

CMD DATA NL CR

where:

CMD is the command identifier

DATA is the data associated with the command

NL is the new line character (0x0A)

CR is the carriage return character (0x0D)

The Net-Log issues a reply to all valid commands received. The type of reply depends on the type of command received. For non-data request commands, the reply will either be an acknowledgement or an error code. For data request commands, the reply will consist of the data requested.

Note: The serial commands are case-sensitive.

Speed of Commands & Responses:

The safest and most reliable method of issuing a batch of RS232 commands to the Net-Log, is to send a command and then wait for a response before sending the next command. So for example, if you want to do a status poll of the Net-Log with:

STATUS

TIME:1

TIME:2

TIME:3

TIME:4

you would proceed as follows:

Issue a STATUS command, wait for status info response,

then issue the TIME:1 command, and wait for the time info or error response,





then issue the TIME:2 command, and wait for the time info or error response,
 then issue the TIME:3 command, and wait for the time info or error response,
 then issue the TIME:4 command, and wait for the time info or error response

The response time will depend on other factors, such as number of channels recording and archive and play activity. The RS232 port has a relatively low priority to ensure it does not interrupt critical processes.

Record Start Command

Command: "START:ch\n\r"

Reply: "ACK\n\r" or "ERR:ee\n\r"

where: START = command identifier
 ch = channel 1,3 for stereo or 1,2,3,4 for mono
 \n\r = new line(0x0A) and carriage return(0x0D)
 ACK = command accepted
 ERR = command rejected
 ee = error code (see below for error codes)

Record Stop Command

Command: "STOP:ch\n\r"

Reply: "ACK\n\r" or "ERR:ee\n\r"

where: STOP = command identifier
 ch = channel 1,3 for stereo or 1,2,3,4 for mono
 \n\r = new line(0x0A) and carriage return(0x0D)
 ACK = command accepted
 ERR = command rejected
 ee = error code (see below for error codes)

Status Command

Command: "STATUS\n\r"

Reply: "STATE:s1,s2,s3,s4,a1,a2,a3,a4,da\n\r"

where: STATUS = command identifier
 \n\r = new line(0x0A) and carriage return(0x0D)
 STATE = reply identifier
 s1 - s4 = record channel status 0=not recording,
 1=recording,2=unavailable
 a1 - a4 = archive channel alarm status 0=no
 alarm,1=alarm activated,3=unavailable

Time Command

Command: "TIME:ch\n\r"
 Reply: "TIME:ch,t1,t2\n\r"
 where: TIME: = command and reply identifier
 ch = channel 1,3 for stereo or 1,2,3,4 for mono
 \n\r = new line(0x0A) and carriage return(0x0D)
 t1 = length of current recording in dd.hh.mm.ss
 t2 = time to data overwrite in dd.hh.mm.ss

Date Command

Command: "DATE\n\r"
 Reply: "DATE:dd/mm/yyyy hh.mm.ss\n\r"
 where: DATE = command identifier
 \n\r = new line(0x0A) and carriage return(0x0D)
 DATE: = reply identifier
 dd/mm/yyyy = current date of Net-Log in GMT
 hh.mm.ss = current time of Net-Log in GMT

Reply Error Codes

The following error codes are used for non-data request commands (START and STOP):

- 1 = invalid channel
- 2 = disabled channel
- 3 = illegal channel
- 4 = channel already in requested state



10 OPTIONS



OPTIONS

10 Options

The Options screens are used for initially configuring the Net-Log before recording. All of the options should be set before Net-Log starts recording, as some of them **can not be altered once recording has started**.

Saving and Loading Options

Once you have finished setting up the options, you can make a copy of them on a PC. This can be particularly useful if you have more than one Net-Log and you want each machine to share a similar configuration.

To save the options for the connected Net-Log, select File, Save As from the main menu. A dialog will be displayed allowing you to specify the location and name of the file that will be used to store the current configuration information. Once you have made these selections, press Save.

To load a previously saved file, select File, Open and then select the file that contains the required configuration information.

Please note, you can only load and save options whilst in the options screens.

Record Options

This screen (Fig 10-1) displays the current settings of the two input channels, and also allows them to be changed. Each input is independent of the other, although when they are set-up for dual mono recording, the two mono channel record settings cannot be configured individually.

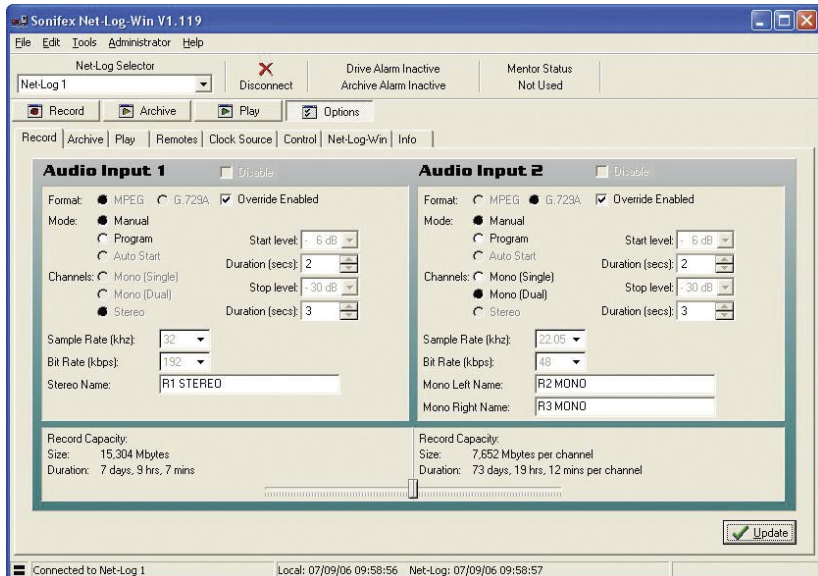


Fig 10-1: Record Options.

Disable

Disables the channel.

Override Enabled

Enables this channel to be controlled by the Record Control button on the front of the Net-Log.

Format

Selects the record format, either MPEG or G.729A. Any existing tracks must be deleted from all channels before the record format can be changed. To use the G.729A record format, an additional license must be purchased from Sonifex Ltd.

Mode

In Manual mode, recording is started and stopped via the Record Start button in the record screen.

In Program mode recording is automatically started and stopped according to the program for that particular channel. Note: If the mode is set to Manual mode, the Program record screen will not be available.

In Auto Start Mode, recording is started and stopped automatically as the input audio level passes through threshold level settings. Auto Start mode is not available for channels configured to use the G.729A record format.

Channels

Channel format i.e. stereo, mono or dual mono. For G.729A channels, only mono or dual mono configurations are available.

Sample Rate & Bit Rate

Selects the recording parameters for that Input. These settings are only relevant to MPEG configured channels.

When selecting the recording bit-rates for the two pairs of channels, it is important to refer to the maximum number of network connections in Chapter 3.

Start Level

Defines the auto recording start threshold level in dB. When the input audio level rises above this value, recording automatically starts.

Start Duration

Sets the minimum track length in seconds for auto recording. Tracks that are shorter than this value are automatically deleted.

Stop Level

Defines the auto recording stop threshold level in dB. When the input audio level falls below this value, recording provisionally stops.

Stop Duration

Sets the period of time that the input audio level must stay below the stop threshold level to complete the end of an auto recording. This value is in seconds.



10 OPTIONS



OPTIONS

Service Names

You can give names to the particular recording channels for easier identification. These names are displayed on the record, archive and play screens and will also be stored in the MPEG BWF or G.729A header of an archive or download file.

Note that once recording has started on a channel, the record format cannot be changed until recording has stopped and all track(s) have been deleted.

Record Capacity

The slide bar at the bottom of the record options screen allows you to select the hard drive partition size for each input. The partition size is the amount of space allocated to each input for storing audio. The bigger the partition the more space is available, allowing for longer recordings. If an Audio Input is set to Mono (Dual), each mono channel will share equally the space allocated for that input.

The duration of the audio recorded to each partition is calculated and displayed. To change the duration for a fixed partition size using MPEG as the record format, the Bit Rate should be set to a new value. A lower Bit Rate means a longer duration and, conversely, a higher Bit Rate means a shorter duration.

Archive Options

This screen (Fig 10-2) displays the current settings for archiving from the Net-Log. See Chapter 7 for more detailed information.

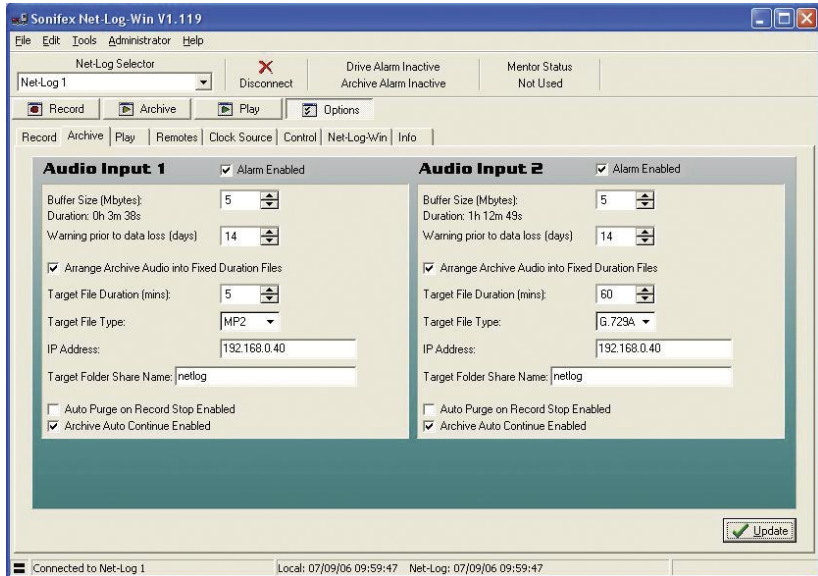


Fig 10-2: Archive Options.

Alarm Enabled

Allows data loss warnings and alarms to be disabled.

Buffer Size (Mbytes)

Amount of data that has to be available before archiving can start.

Warn time prior to data loss

Amount of time prior to data loss occurring that a warning is activated.

Arrange Archive Audio into Fixed Duration Files

Formats the archived audio into fixed duration files.

Target File Duration (mins)

The length of the target files. (5 - 60 minutes)

Target File Type

The type of files that are created. The options available for this setting will change depending on the record format selected for this channel.

Destination IP Address

The IP Address of the destination computer.

Target Folder Share Name

The share name of the destination folder on the target computer.

Auto Purge on Record Stop Enabled

Automatically downloads all outstanding audio on a channel when the recording is stopped.

Archive Auto Continue Enabled

Allows the PC running Net-Log-Win to automatically continue archiving on enabled channels.

Note that some of the settings cannot be changed while archiving is active for a channel.



10 OPTIONS



OPTIONS

Play Options

This screen (Fig 10-3) displays the current play default settings. These settings apply to the PC currently running Net-Log-Win and are not saved on the currently connected Net-Log.

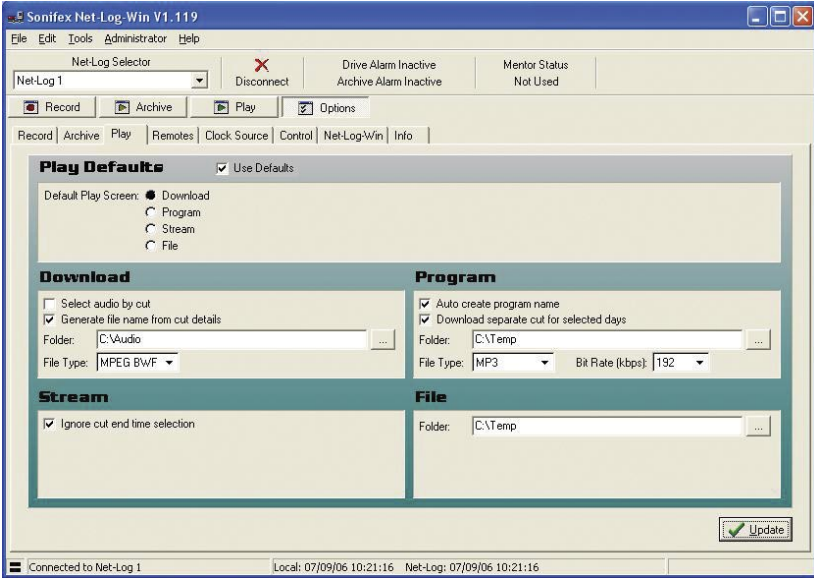


Fig 10-3: Play Options.

Use Defaults

Enables all the defaults for play. If this box is not checked, all the defaults are ignored.

Default Play Screen

The selected play screen will be displayed first when entering play.

Play Download Defaults:

Select Audio By Cut and Generate File Name From Cut Details

Enables the corresponding options in the play download screen.

Folder

Selects the default folder where downloaded audio files will be written.

File Type and Bit Rate

Selects the default file type to create, and selects the MP3 bit rate when the file type is set to MP3.



Play Program Defaults:

Auto Create Program Name and Download Separate Cut For Selected Days

Enables the corresponding options in the play program screen.

Folder

Selects the default folder where downloaded audio files will be written.

File Type and Bit Rate

Selects the default file type to create, and selects the MP3 bit rate when the file type is set to MP3.

Play Stream Defaults:

Ignore cut end time selection

Disables selection of the cut end time when clicking on the play stream cut list.

Play File Defaults:

Folder

Selects the default folder for opening audio files in the play file screen.

Remotes Options

This screen (Fig 10-4) displays the current settings of the record remote inputs for the Net-Log. The two pairs of audio input channels can be set-up independently. There are three settings for the remotes, and these are:

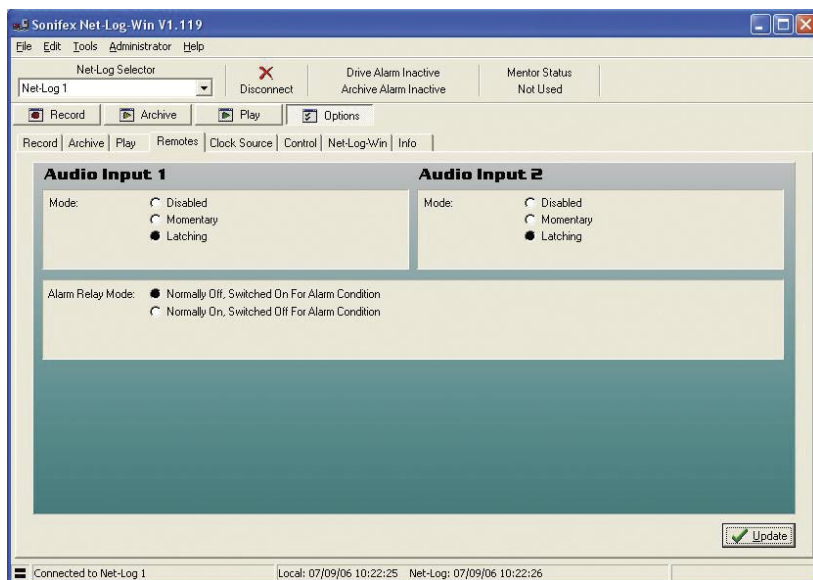


Fig 10-4: Record Remotes Options.

10 OPTIONS



OPTIONS

Disabled

The remote inputs are disabled for this channel.

Momentary

While the specific pin is connected to ground this channel will be recording.

Latching

Connecting the specific pin to ground for half a second will cause the Net-Log to start recording on that channel. Doing this again will cause it to stop recording.

For information on the remote connector pin connections, please refer to Section 13 - Technical Specifications.

This screen also displays the current settings for the Alarm Relay. The remote connector has a pair of contacts that become connected/disconnected when an alarm condition occurs.

Normally Off, Switched On For Alarm Condition

The contacts on the remote connector are connected when an alarm condition occurs.

Normally On, Switched Off For Alarm Condition

The contacts on the remote connector are disconnected when an alarm condition occurs.

Clock Source Options

When updating the RTC clock, the Net-Log gets its source from either the clock of the connected PC, or the Sonifex Mentor Server (Fig 10-5). For more information about how Net-Log uses the time settings see Section 11.

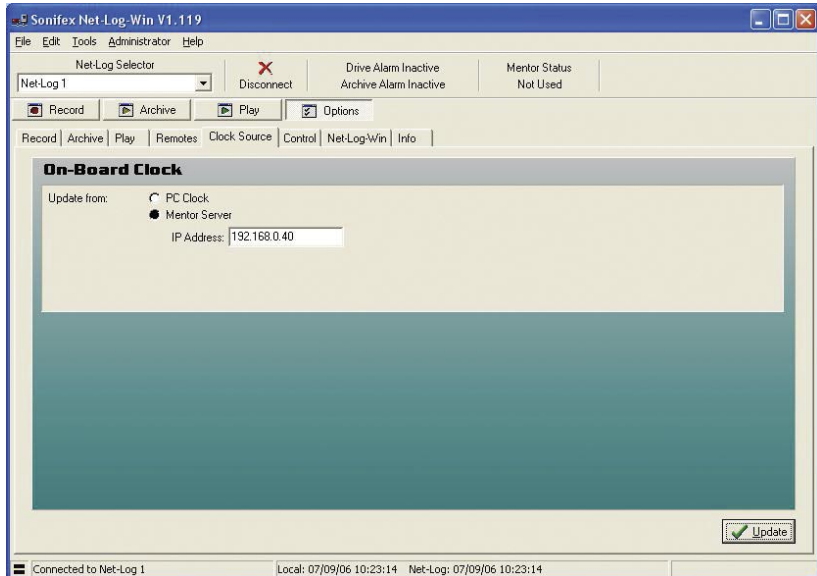


Fig 10-5: Clock Source Options.

Control Options

This screen (Fig 10-6) displays the currently selected serial Control Interface. If any additional options exist for an interface, these will be displayed when the relevant type is selected. The current options are:

No Control/Interface Selected

The serial Control Interface is disabled.

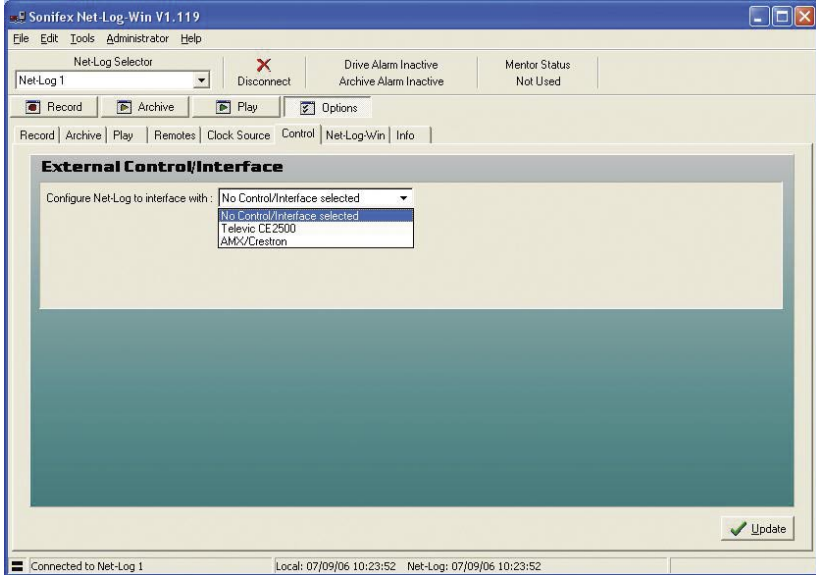


Fig 10-6: Control Interface Options.

Televic CE2500

The Serial Control Interface is configured for connection to the Televic CE2500 Digital Conference and Interpretation System. Additional options are displayed for configuring the available record channels to be controlled by specific microphones (see Fig 10-7).

AMX/Crestron

The Serial Control Interface is configured for connection to an AMX/Crestron Control Panel. There are no additional options for this interface type.



10 OPTIONS



OPTIONS

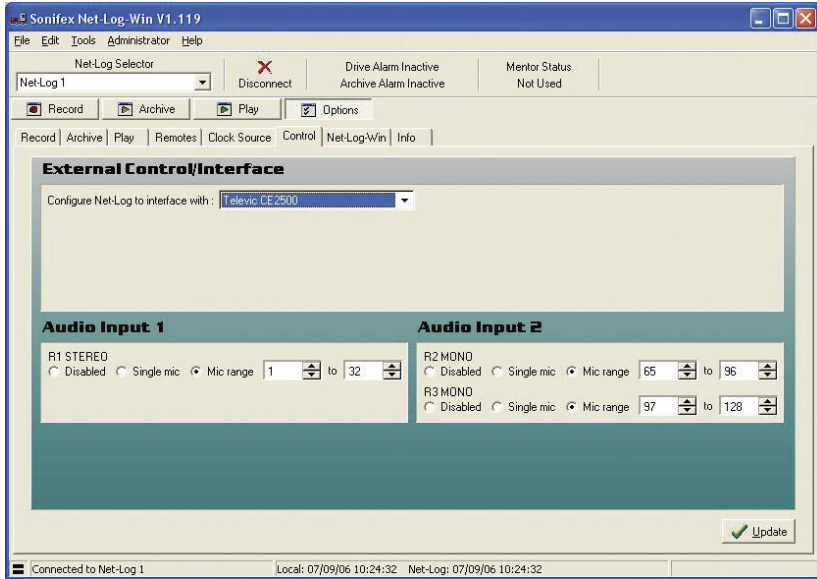


Fig 10-7: Televic CE2500 Control Options.

Net-Log-Win Options

This screen (Fig 10-8) displays the options specific to the appearance of Net-Log-Win. Two fonts used in the Net-Log-Win screens can be changed to allow different character sets to be displayed such as Japanese.



OPTIONS

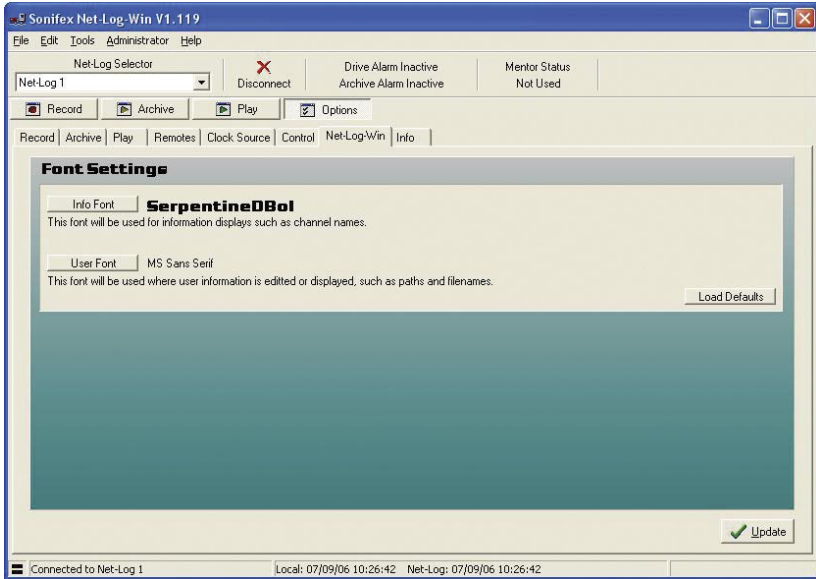


Fig 10-8: Net-Log-Win Options.

Info Font

The info font is used to display channel names in the Record, Archive and Play screens.

User Font

The user font is used to display user entered text.

10 OPTIONS

Information

This screen (Fig 10-9) displays general information about the Net-Log. The Network settings are the MAC Address, IP Address, Subnet Mask and Default Gateway for the connected Net-Log. The administrator can change all these settings (except the MAC address) by selecting the Network Settings menu in the administrator menu or by using the Net-Log-Win serial utility, whereby the settings are downloaded to the Net-Log via the serial port. The MAC Address is also stored in the BWF header of an archive or download file.

The Disk Drive Info shows the Model, Serial Number, Firmware Revision and Capacity of the disk drive.

This screen also reports the Remote capability of the Net-Log. Earlier units only had remote input connections on the rear panel mounted the 15-way 'D-Type' connector. These inputs are used to start and stop the recording process remotely. The latest Net-Log hardware has Record Tally Outputs on the 15-way 'D-Type' connector, in addition to the remote inputs, that indicate when the associated channel is recording.

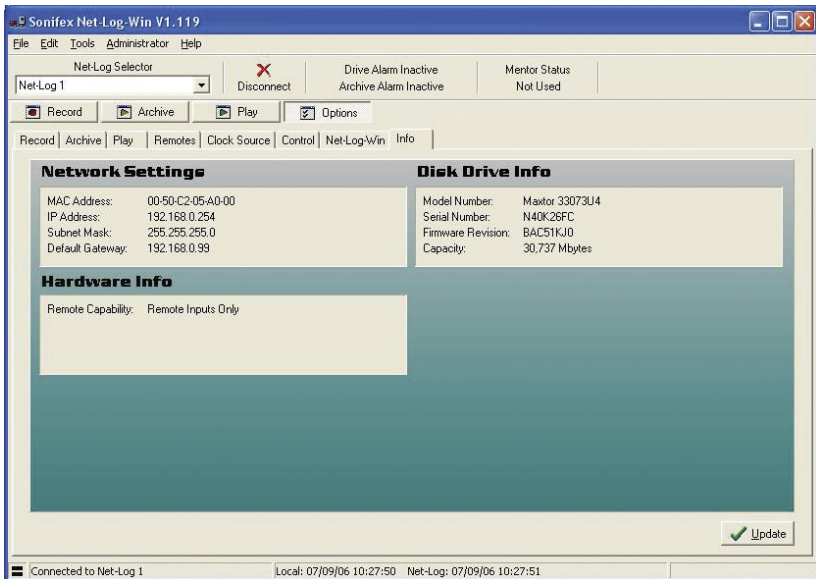


Fig 10-9: Info Options.

11 The Administrator

There are several operations that can only be accessed by the administrator. These include the License entry and Accounts editor screens and they are all accessed through the Administrator menu. (Fig 11-1).



Fig 11-1: Net-Log Administrator Menu.

Licenses

This screen displays how many users the Net-Log is licensed for and also allows the administrator to enter more licenses. (See Fig 4-2)

Accounts Editor

The Accounts Editor (Fig 11-2) can be accessed via the Administrator menu option and is used to set-up or change accounts for users who connect to the Net-Log. Below are all the default User Names. Initially the user name and passwords are the same – these can (and should) be altered once the software is running.

“admin”

This is the Administrator’s login. The administrator is in charge of defining user profiles and configuring the settings of the Net-Log.

“user1” to “user25”

Up to 25 users can be defined in the software. Each user can be given different access rights for each function – these are described in more detail below.

“guest”

Guest entry allows playback only.

These password settings are stored on the Net-Log machine currently being connected to, so if you have a number of machines, you can change user access to each machine individually.



Fig 11-2: Accounts Editor.

Function Access – View

There are four check boxes associated with this restriction control (Fig 11-3) If checked, the currently selected user will be able to view that specific function but will not be able to change the operation of that specific function in any way.

Note that the administrator will always have view access to configuration and that this cannot be changed.



Fig 11-3: Function View.

Function Access – Control

There are three check boxes associated with this restriction control (Fig 11-4). If checked, the currently selected user will be able to view and control that specific function.

Note that only one person can have access to archive control and by default this is the administrator.



Fig 11-4: Function Control.

User Name & Password

To change a user name or password, select the user whose details you wish to change and type in a new name or password (Fig 11-5).

Note that all the changes made will only take effect when the “Update” button is pressed. If “Abort” is pressed then the changes are lost.

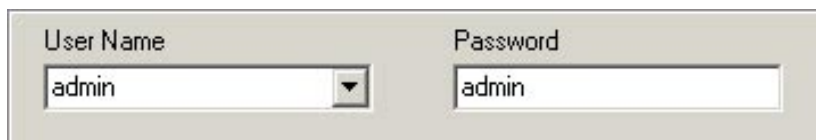


Fig 11-5: Select or Edit User Name & Password.

The Onboard Clock

The Net-Log uses an accurate onboard real time clock (RTC) to record the start & stop times of cuts and to start & stop record programs. This time is stored on the Net-Log in UTC format which is identical to Greenwich Mean Time and is unaffected by any summer or daylight saving time schemes.

The accuracy of the RTC is ± 1.53 minutes per month. This equates to about 3 seconds per day. During long or continuous recordings, an error can develop between the actual time a piece of audio is recorded, and the time used from the RTC to reference the cut. In a worst





case scenario, when the RTC is running slightly slow with respect to real time, the audio at the end of a long recording could be unavailable. This is because the time stamp taken from the RTC for the end of the cut would be earlier than the actual time the cut ended. To overcome this, the Net-Log firmware determines whether the RTC derived time for the end of a recording differs from the time the Net-Log calculates the cut should end at. This calculation is made using the start time and length of the recording. Future play or archive accesses to this cut will then use this error figure to bias the search calculation so that the whole cut is accessible.

If the RTC has drifted, then the start time of any new cuts will not be a true reflection of the actual time the recording was started. If the start time for a recording is inaccurate, the time displayed when playing the recording and when searching within it will also be inaccurate. Also, if program record mode is used, the automated record starts/stops will not happen at exactly the right time. It is important therefore, to regularly update the RTC if accurate audio to time synchronisation is required.

Updating The Onboard Clock

The onboard clock can be updated at any time. If an update occurs whilst a channel is recording, and the difference between the current RTC and the time update is greater than two seconds, the recording will stop prior to the clock update. Once the clock has been updated, a new recording will automatically begin. This is done to reduce the error correction required when searching for audio. It also happens so quickly that you will not lose any audio. However there will be a time difference between the two recordings.

There are two options for RTC clock updates. The first is to update Net-Log with the time currently set on the connected PC. This is an administrator only function and it is not automatic. The second option is to automatically synchronise the onboard clock to a specific PC using the Mentor software. It is advisable to have the clock on the PC running the Mentor server accurately maintained from an external source. The Mentor software will then distribute the time information to multiple Net-Logs every 30 minutes.

Whichever update method is used it is very important that any PC used to connect to Net-Log is set for the right Time Zone. Otherwise, the conversion between UTC and local time that Net-Log-Win performs for all time related data, will be incorrect. This is set in the PC Control Panel setting for Date/Time.

It is possible to force a clock update for either of the two clock options by selecting the Administrator menu (Fig 11-1), and then Update Onboard Clock. If you are using the PC clock option and you want to keep the Net-Log clock accurate to within 10 seconds, you will need to do this every 2-3 days.

Network Settings

To change the Network Settings of the Net-Log simply enter the administrator menu and select the Network Settings menu. The screen (Fig 11-6) shows the current settings and next to these are a series of edit boxes where the new settings should be typed. When they have been entered simply press the "Update" button, the settings will then be downloaded to the

Net-Log and the application will shut down. Once the Net-Log has re-initialised with new settings you can restart Net-Log-Win. You may need to change the IP Address of the unit in the device editor before you can attempt to log onto the Net-Log.

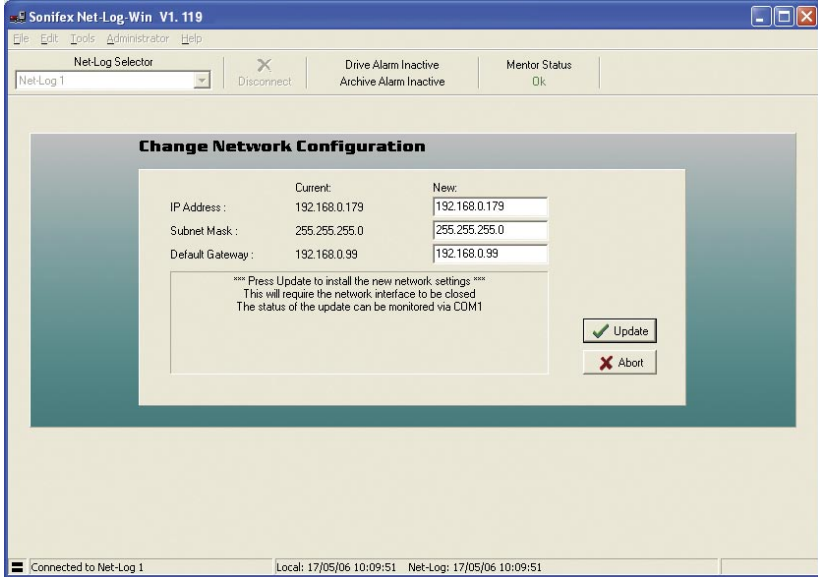


Fig 11-6: Network Settings.

Updating Firmware

From time to time updates will be made available to keep the Net-Log running smoothly and reliably. To update the firmware contained in the Net-Log simply select the “Firmware Update” option in the Administrator menu, you will then be given a warning and asked to confirm your action. If “Ok” is pressed, you will then have to select the update file (.dwn suffix). Once this has been done you will be taken to the Net-Log Update Firmware screen. Press the “Transfer” button and the file will then be transferred onto the hard drive contained on the Net-Log (Fig 11-7).

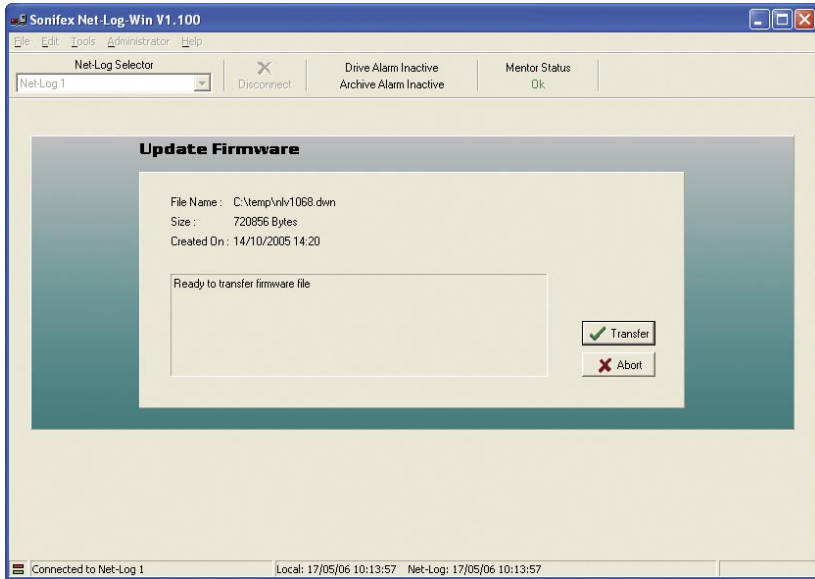


Fig 11-7: Upgrading Firmware.

Please note that you can still abort the update even after the transfer has been completed. To commence the actual update, press the “Transfer” button again. The System ROM is then erased and programmed with the updated software (shown by the Record Control button on the front of the Net-Log being lit), after which the Net-Log will restart and is ready for use again. Note that updating the firmware can also be done using the Net-Log serial utility.

For the latest firmware updates check the Sonifex website at www.sonifex.co.uk.

Sometimes, updating the firmware can result in the loss of audio data depending on which firmware version you are upgrading from/to. Information on this is also on the website.

Resetting The Net-Log

This option is a sub menu of system in the administrator menu. This is used to restore all the configuration settings to factory defaults. It also deletes all the tracks contained on the Net-Log.

12 Tools

The Tools menu (Fig 12-1) contains a number of useful tools to check on the performance and status of the Net-Log unit. There is also a Delete Cuts sub-menu, although this is only available to users who have record access.

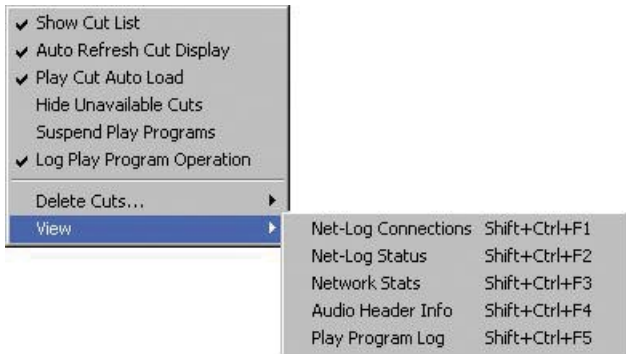


Fig 12-1: Net-Log Tools Menu.

Show Cut List

When this option is not ticked, the cut list display in the play screens is hidden. This option is ticked by default.

Auto Refresh Cut Display

With this option ticked, the cut displays in the Play screen will automatically refresh when a recording is started or stopped, or when you change to a different channel.

Play Cut Auto Load

When this option is ticked, the details of the first recording for the selected Start Date will automatically be loaded into the current Play screen (Play Download or Play Stream).

Hide Unavailable Cuts

When this option is ticked, all recordings that are no longer available due to being over-recorded are hidden from the Play screen cut list.

Suspend Play Programs

When this option is ticked, the execution of Play Programs is halted. Any program download that is currently active will be completed but no further downloads will start.

Log Play Program Operation

When this option is ticked, information about the progress of Play Program downloads is written to a log file. Information includes details about when a download is completed, as well as information on any errors that were encountered during the program, such as failure to locate the selected audio.



TOOLS



Deleting Cuts

This menu option does exactly what it says. When you select this option a sub-menu appears showing all the channels that you are able to delete cuts from. Note that you can only delete cuts from a channel if this channel is not currently recording. The Delete All option automatically deletes all cuts from all non-recording channels.

View

Contained in his menu are five sub-menus. Net-Log Connections, Net-Log Status, Network Stats, Audio Header Info and Play Program Log. Each of these display information about Net-Log's performance and status, and are described in more detail below.

Net-Log Connections

This useful screen (Fig 12-2) displays all users currently connected to Net-Log, and displays their IP Address and connection duration.

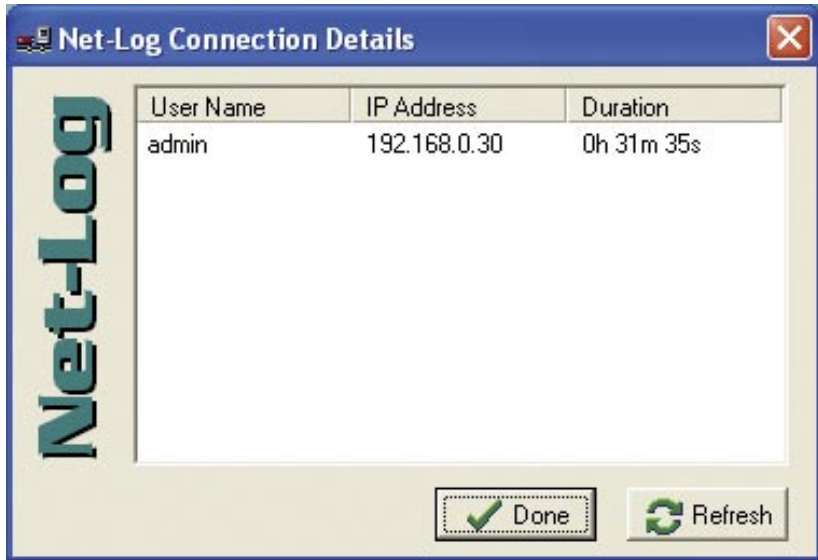


Fig 12-2: Net-Log Connections Screen.

Net-Log Status

This screen (Fig 12-3) displays the status of the Net-Log and All the Input Channels. Described below are all the status indicators.

Drive Alarm

Problem writing to the Disk. (Equivalent to the LED on the front panel). This Alarm is cleared only once the fault has been rectified.

The next 3 indicators give momentary indication of a change in state of the appropriate feature

Cut Change

Indicates a recording start/stop or cuts being deleted.

Program Change

Programs have been changed.

Config Change

Configuration settings have been changed.

Record Auto Enabled

Auto record mode is enabled on the specified channel.

Record Active

Net-Log is currently recording on the specified channel.

Archive Enabled

Archive is enabled on the specified channel.

Archive Pending

Net-Log has data ready to archive for the specified channel but Archiving is not enabled.

Archive Auto Purge

Archive will transfer all available audio data for the specified channel.

Archive Active

Data is currently being archived from the specified channel.

Archive Warn

Loss of data is about to occur on the specified channel.

Archive Alarm

Loss of data is has occurred on the specified channel.



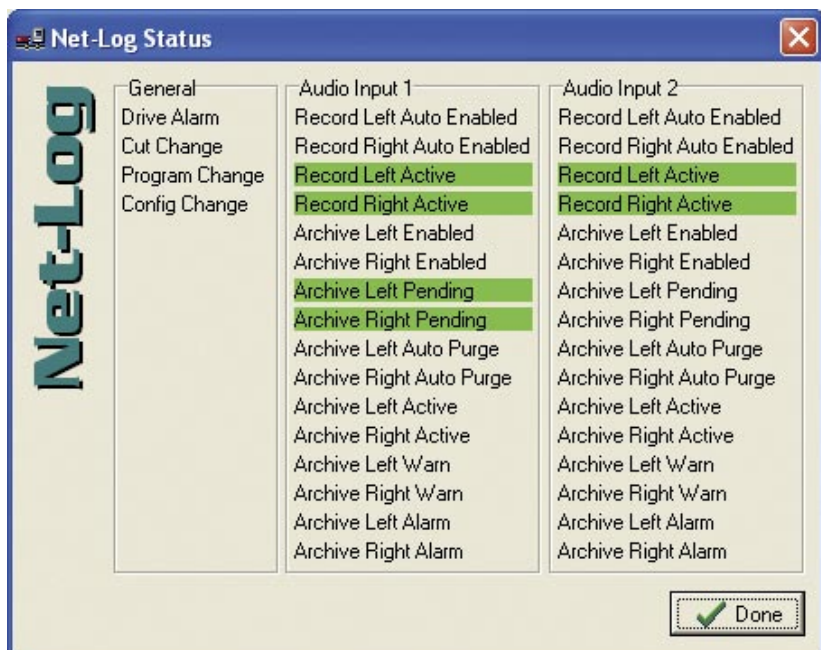


Fig 12-3: Net-Log Status Screen.

Network Stats

This screen (Fig 12-4) displays the rate of transmission between the Net-Log and connected Client, and also displays the status messages transmitted to and from the Net-Log. This is useful for network traffic monitoring.

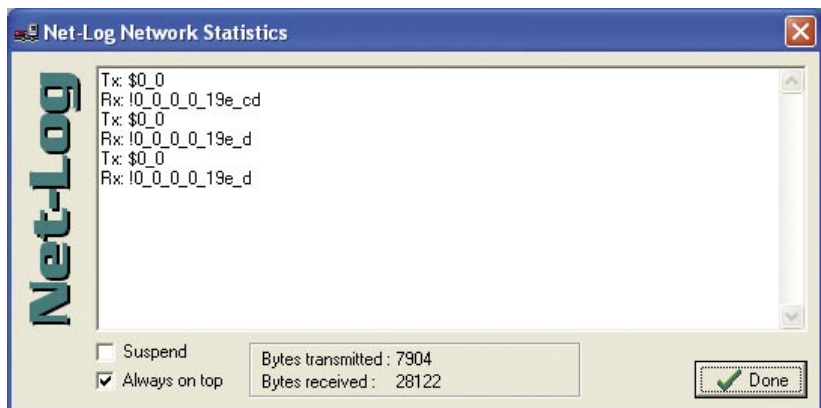


Fig 12-4: Net-Log Stats Screen.

Audio Header Info

This screen (Fig 12-5) shows detailed information about the audio cuts on the selected Net-Log. It is mainly for debugging purposes.

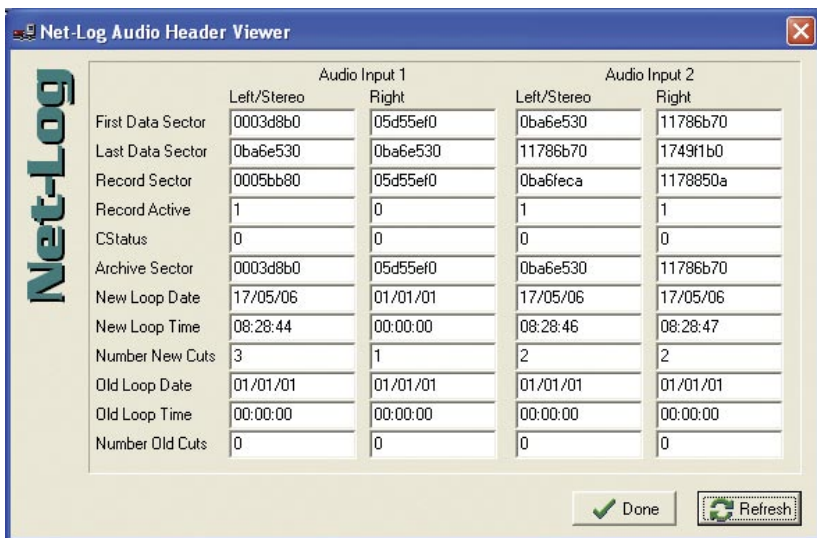


Fig 12-5: Net-Log Audio Header Info Screen.

Play Program Log

This screen (Fig 12-6) shows information on the progress of any Play Programs that have been executed. Its main use is to determine the cause of any errors that were encountered.

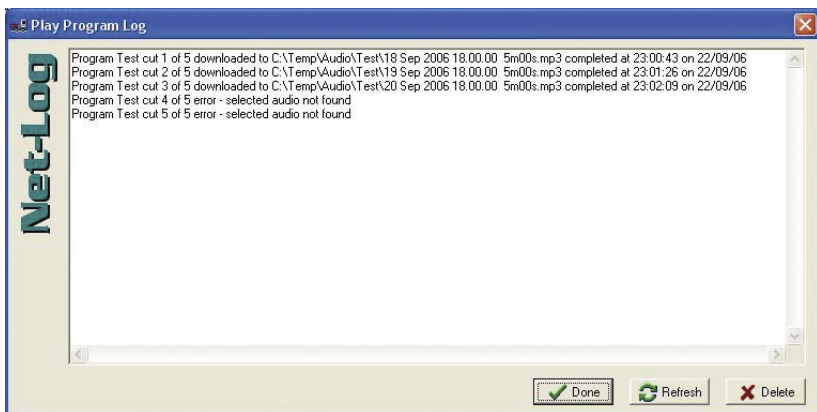


Fig 12-6: Play Program Log Screen.



About Sonifex Net-Log

This screen (Fig 12-7) accessible from the help menu shows the software versions of the Net-Log-Win and the currently connected Net-Log. The current status of the License on the currently connected Net-Log is also shown here. The information on this screen is mainly used for debugging and version checking.



Fig 12-7: Net-Log About Screen.

13 Technical Specification - Net-Log

Physical Specification

External Dimensions:	1U 19" rack X 220mm deep
Net Weight:	2.5kg
Gross Weight:	3.5kg

Audio Specification

Input Impedance:	>10kΩ balanced
Input Gain Range:	-6dBu to +20dBu ref. full scale digits
Maximum Input Level:	+20dBu
Distortion:	<0.1% @ 1kHz +16dBu
Signal To Noise Ratio:	90 dB RMS a wtd. 22kHz bandwidth
Wow and Flutter:	Un-measurable
Phase Error at 10kHz:	Un-measurable

Please note that the audio specification of the play output depends on the soundcard that you have installed in your PC. Net-Log is a recording device and has no audio output of its own.

Rear Panel Connections, Controls and Indicators

Analogue Inputs (4):	XLR 3 Pin socket
Input Level Controls (4):	Rotary pre-set potentiometers
Network:	RJ45 (10BaseT) and BNC (10Base2) 10Mbps Ethernet
Network Status LED's:	Rx, Tx, link and collision
RS232 (2):	9 way D-type plug
Alarm Outputs and Remote Inputs/Outputs:	15 way D-type plug
Power:	IEC Power Plug, 95-265 VAC, 47-63Hz, peak 60W, 30W average

Front Panel Controls and Indicators

Controls:	Record control to instantly start recording
Alarm Indicators (2):	Disk drive alarm, archive alarm
Level Indicators (4):	Analogue input level for each indicator



TECHNICAL SPECIFICATION

13 TECHNICAL SPECIFICATION



TECHNICAL SPECIFICATION

Additional Information

Audio Formats:	MPEG layer 2, G.729A
Sample Rates:	MPEG: 16kHz, 22.05kHz, 24kHz, 32kHz, 44.1kHz and 48kHz G.729A: fixed at 8kHz
Recording Types:	MPEG: Stereo, Dual Mono, Mono G.729A: Dual Mono, Mono
Minimum PC Specification	Pentium 166MHz, 64MB RAM, Windows compatible Sound card (capable of playing PCM files) & speakers, 10Mbps network connection, Windows 98/NT/2000/XP, DirectX 6 or greater.
Real Time Clock Accuracy:	1.53 minutes per month.
Hard Disk Capacity:	A minimum hard-disk size of 200GB is fitted Due to the rapidly increase of disk capacities, the actual hard disk installed may be larger than this.

The following tables show the capacity in duration for the different record formats. If more than one channel is used then the duration will need to be shared.

MP2 Record Data Rates

MPEG Data Rate in kilobits per second (kbps)	Record Duration per Gigabyte of Hard Disk Space
8	11d 13h 46m
16	5d 18h 53m
24	3d 20h 35m
32	2d 21h 26m
40	2d 7h 33m
48	1d 22h 17m
56	1d 15h 40m
64	1d 10h 43m
80	1d 3h 46m
96	23h 8m
112	19h 50m
128	17h 22m

MPEG Data Rate in kilobits per second (kbps)	Record Duration per Gigabyte of Hard Disk Space
144	15h 25m
160	13h 53m
192	11h 34m
224	9h 55m
256	8h 41m
320	6h 56m
384	5h 47m

G.729A Data Rate in kilobits per second (kbps)	Record Duration per Gigabyte of Hard Disk Space
9.6 (fixed)	9d 15h 28m

MP3 Data Rates Supported For Play Download

The selectable mp3 bit rates for Play Download in Net-Log-Win are dependant on the sample rate of the original recording as follows:

Original Sample Rate:	Available Bit-Rates:
16kHz, 22kHz & 24kHz	32 kbps, 40 kbps, 48 kbps, 56 kbps, 64 kbps, 80 kbps, 96 kbps, 112 kbps, 128 kbps or 160 kbps
32kHz, 44.1kHz & 48kHz	32 kbps, 40 kbps, 48 kbps, 56 kbps, 64 kbps, 80 kbps, 96 kbps, 112 kbps, 128 kbps, 160 kbps, 192 kbps, 224 kbps, 256 kbps or 320kbps



13 TECHNICAL SPECIFICATION



Pin Connections

COM 1/2 (9 Pin D-Type Plug):

Pin No.	Signal	Direction	Description
1	CD	I	Carrier Detect
2	Rx	I	Receive Data
3	Tx	O	Transmit Data
4	DTR	O	Data Terminal Ready
5	SG	-	Signal Ground
6	DSR	I	Data Set Ready
7	RTS	O	Request To Send
8	CTS	I	Clear To Send
9	N/C	-	No Connection

Network Connector (RJ45):

Pin No.	Signal	Direction	Description
1	Tx+	O	Transmit Data (Positive)
2	Tx-	O	Transmit Data (Negative)
3	Rx+	I	Receive Data (Positive)
4	N/C	-	No Connection
5	N/C	-	No Connection
6	Rx-	I	Receive Data (Negative)
7	N/C	-	No Connection
8	N/C	-	No Connection

Network Connector (BNC Socket):

Pin No.	Signal	Direction	Description
1	Rx	I	Receive Data
2	Tx	O	Transmit Data

Audio Inputs (XLR Socket):

Pin No.	Signal	Direction	Description
1	S	-	Screen
2	P	I	Phase
3	NP	I	Non-Phase

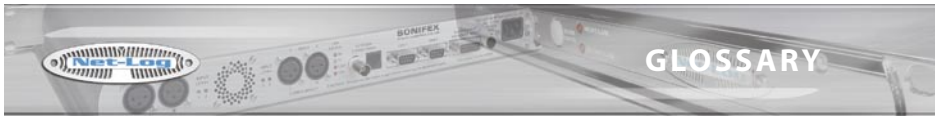
Alarm Outputs/Remote Inputs And Outputs (15 Pin D-Type Plug):

Pin No.	Signal	Direction	Description
1	Relay Common	O	Alarm Output Relay Common
2	Relay N/C	O	Alarm Output Relay N/C to Pin 1 activates for both Archive and Hard Disk Alarms
3	Relay N/O	O	Alarm Output Relay N/O to Pin 1 activates for both Archive and Hard Disk Alarms
4	Relay Common	O	Alarm Output Relay Common
5	Relay N/C	O	Alarm Output Relay N/C to Pin 4 activates for both Archive and Hard Disk Alarms
6	Relay N/O	O	Alarm Output Relay N/O to Pin 4 activates for both Archive and Hard Disk Alarms
7	GND	-	Ground
8	REMOTE_I1	I	Remote Input 1 short to Ground (Remote record Channel 1, Left input 1). Set to momentary or latching action via the Options, Record Remotes screen.
9	REMOTE_I2	I	Remote Input 2 short to Ground (Remote record Channel 2, Right input 1) Set to momentary or latching action via the Options, Record Remotes screen.
10	REMOTE_I3	I	Remote Input 3 short to Ground (Remote record Channel 3, Left input 2) Set to momentary or latching action via the Options, Record Remotes screen.
11	REMOTE_I4	I	Remote Input 4 short to Ground (Remote record Channel 4, Right input 2) Set to momentary or latching action via the Options, Record Remotes screen.
12	REMOTE_O1	O	Record Tally Output 1. Open collector driver (Channel 1, Left input 1)
13	REMOTE_O2	O	Record Tally Output 2. Open collector driver (Channel 2, Right input 1)
14	REMOTE_O3	O	Record Tally Output 3. Open collector driver (Channel 3, Left input 2)
15	REMOTE_O4	O	Record Tally Output 4. Open collector driver (Channel 4, Right input 2)





Glossary	
10Base2	Coaxial, Thin Ethernet. The 10 indicates a transfer rate of 10 Mbps. Base indicates a baseband medium and the 2 indicates that the sections must be a maximum of 200 meters.
10BaseT	RJ45, Twisted Pair Ethernet. The 10 indicates a transfer rate of 10 Mbps Base indicates a baseband medium and the T indicates twisted pair wiring.
Bit Rate	The raw speed of data over a serial link. Depending on the type of link this may indicate the theoretical maximum rates e.g. 10BaseT sends packets of data at 10Mbps but due to overheads and the availability the actual data throughput is significantly less. For audio data rates the bitrate is the actual amount of data generated per second
Channel	Audio signal that generates a single audio stream. The signal can be either mono or stereo but will still be treated a single channel. If the Net Log is formatted to use dual mono then this is considered as providing 2 channels. If both audio inputs are formatted as dual mono then a total of 4 channels will be available.
Client	A node on the network that receives services from a server.
Collision (CI)	This occurs when two different nodes attempt to use the network at the same time.
Cut	A single continuous piece of audio, either stereo or mono, recorded on the hard drive
dB (decibel)	A ratio of two voltages or signal levels, expressed by the equation $dB = 20\text{LOG}(V1/V2)$ <p>Adding the suffix "u" denotes that the signal is relative to 0.775V RMS Adding the suffix "v" denotes that the signal is relative to 1V RMS</p>
DHCP	Dynamic Host Configuration Protocol; Hosts are given configuration information across a network, usually from a server.
DNS	Domain Name System; TCP/IP applications resolve a name into an IP Address
G.729A	High compression record format primarily designed for speech.
Gain	The degree of amplification, or attenuation, applied to a signal.
Gateway	A router that links one network to another.
Gigabyte or GB	1000 million bytes of data storage for a disk drive or 1073 million bytes of data storage for memory (i.e. 1024 x 1024 x 1024 bytes)
Host ID	The part of the IP Address identifying the node within the network.
Hub	A device used to connect nodes together to form a network.
IP Address	Internet Protocol Address; A 32-bit address used to locate a node on a network.
kbps	Acronym for kilo (thousand) bits per second
LED	Light Emitting Diode.
Link	A connection to a network.
Mbps	Acronym for Mega (million) bits per second



MPEG	Acronym for Motion Picture Experts Group who were responsible for the initial audio compression specification
NetworkID	The part of the IP Address identifying the address of the local network.
NIC	Network Interface Card; A card placed in a PC or Device used to connect to a network.
Node	A device connected to a network, usually a PC or Printer.
Octet	Eight bits. There are four octets in an IP Address.
Rx	Shorthand for Receiver
Sample Rate	The frequency at which the incoming audio is sampled. The higher the sample rate the higher the frequency of the audio that will be captured.
Subnet Mask	A mask address to determine the NetworkID and HostID contained in an IP Address.
Switch	An intelligent hub.
TCP/IP	Transmission Control Protocol/Internet Protocol;
THD	The Total Harmonic Distortion is the percentage presence of signals outside the measured frequency range.
Tx	Shorthand for Transmitter
UTC	Acronym for Universal Time Code which is an internet reference time based on Greenwich Mean Time
UTP	Acronym for Unshielded Twisted Pair which is the description of the type of cable normally used networking or phone connections



GLOSSARY



Index

A

Accounts Editor	67
Administrator	
<i>Accounts Editor</i>	67
<i>Licenses</i>	67
<i>Network Settings</i>	70
<i>Onboard Clock</i>	69
<i>Resetting Software</i>	72
<i>Updating Firmware</i>	71
Alarm Indicators	24
Alarm Outputs And Remote Inputs	
And Outputs	8
Alarm Pin Connections	81
AMX/Crestron Interface	54
AMX/Crestron Protocol	54
Archive-Options	60
Archive Alarm	6
Archive Screen-Auto Archive	46
Archiving	3, 37
<i>Downloading Audio Archive</i>	37
<i>Format of Archived Files</i>	39
<i>Options Archive</i>	37
Audio File Types	36
Audio Header Info	76
Audio Inputs/Input Level Control	7
Audio Inputs Pin Connections	82
Audio Input Levels	9
Auto-Archive	41
<i>Archive Screen-Auto Archive</i>	46
<i>Auto-Delete Archives</i>	44
<i>Control Screen-Auto Archive</i>	45
<i>Downloading Audio Auto-Archive</i>	41
<i>E-Mail Options-Auto Archive</i>	43
<i>Event Log Screen-Auto Archive</i>	46
<i>Options Auto Archive</i>	42
<i>Reports-Auto Archive</i>	48
<i>Status Screen-Auto Archive</i>	44
Auto-Delete Archives	44
Auto Recording	30

B

BWF	36
-----	----

C

CE Mark	ix
Changing User Details	23
Clock Source	63
Connecting the Net-Log	11
Connections	73
Connect the unit to your network	17

Control-Options	64
Control Screen-Auto Archive	45

D

Default Gateway	15
Deleting Cuts	73
Device List Editor	21
DirectX	79
DirectX 6	4
Disconnect/Log-Off Button	24
Disk Drive Alarm	6
Downloading Audio Archive	37
Downloading Audio Auto-Archive	41
Downloading Audio Play	33

E

E-Mail Options-Auto Archive	43
Entering Network Settings	14
Event Log Screen-Auto Archive	46

F

Firmware Upgrades	15
First Time Use of Net-Log	23
Formats Available for Recording	26
Format of Archived Files	39
Front Panel	5
<i>Archive Alarm</i>	6
<i>Disk Drive Alarm</i>	6
<i>Level Indicators</i>	5
<i>Power</i>	5
<i>Record Control/Indicator</i>	6
<i>Reset Switch</i>	6
Fuse Rating	ix

G

G.729A	36
General Overview	1

I

Information-Options	65
Installing Net-Log-Win Software	13
IP Addresses	11

L

Level Indicators	5
Licenses	67
License Agreement	i
Licensing Your Net-Log	20
Login Procedure	21



M	
Manual Recording	27
Maximum Concurrent Users	19
Maximum Network Connections	10
Mentor Status	25
Mpeg	36
Multiple Net-Logs On A Network	19
N	
Net-Log & PC Time	25
Net-Log Control Software	2
<i>Archiving</i>	3
<i>Playing</i>	2
<i>Recording</i>	2
Net-Log Selector	24
Network	4
<i>DirectX 6</i>	4
Network Activity Indicators	24
Network Connections	7
Network Pin Connections	82
Network Settings	70
Network Stats	75
Network Status Indicators	7
Network Topology	9
O	
Onboard Clock	69
Options	58
<i>Archive-Options</i>	60
<i>Clock Source</i>	63
<i>Control-Options</i>	64
<i>Information-Options</i>	65
<i>Record-Options</i>	58
<i>Record Capacity-Options</i>	59
<i>Record Remotes</i>	62
<i>Saving and Loading Options</i>	66
<i>Service Names-Options</i>	59
Options Archive	37
Options Auto Archive	42
P	
Playing	2
Playing & Downloading	32
<i>Audio File Types</i>	36
<i>BWF</i>	36
<i>Downloading Audio Play</i>	33
<i>G.729A</i>	36
<i>Mpeg</i>	36
<i>Play Auto Refresh</i>	32
<i>Play Download by Date & Time</i>	33
<i>Play Download</i>	33
<i>Play Download by Selecting Tracks</i>	33
<i>Play File</i>	35
<i>Play Stream</i>	34

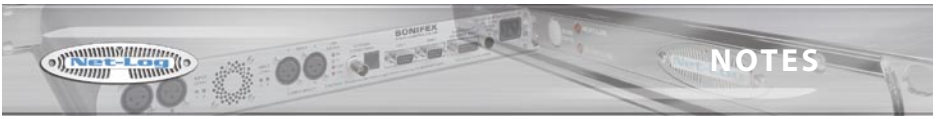
<i>Track List Display</i>	32
<i>Wave Format</i>	36
Play Auto Refresh	32
Play Download	33
Play Download by Date & Time	33
Play Download by Selecting Tracks	33
Play File	35
Play Stream	34
Play Streaming	10
Power	5
Power Cable and Connection	ix
Power Connection	ix
Program Recording	27

R	
Rear Panel	7
<i>Alarm Outputs And Remote Inputs</i>	
<i>And Outputs</i>	8
<i>Audio Inputs/Input Level Control</i>	7
<i>Network Connections</i>	7
<i>Network Status Indicators</i>	7
<i>RS232 Serial Ports</i>	7
Record-Options	58
Recording	2, 26
<i>Auto Recording</i>	30
<i>Formats Available for Recording</i>	26
<i>Manual Recording</i>	27
<i>Program Recording</i>	27
<i>Record Control/Indicator</i>	27
<i>Record maximum cuts</i>	27
<i>Record Tally Outputs</i>	31
<i>Remote Recording</i>	31
<i>Saving and Loading Record Programs</i>	29
Record Capacity-Options	59
Record Control/Indicator	6
<i>Manual Recording</i>	27
Record Maximum Cuts	27
<i>Record Screen</i>	27
Record Remotes	62
Record Tally Outputs	31
Remote Recording	31
Reporting Software Bugs	viii
Reports-Auto Archive	48
Resetting Software	72
Reset Switch	6
RS232 Serial Ports	7

S	
Saving and Loading Options	66
Saving and Loading Record Programs	29
Serial Control Interface	49
<i>AMX/Crestron Interface</i>	54
<i>AMX/Crestron Protocol</i>	54
<i>Serial Control Interface Introduction</i>	49
<i>Televic CE2500 Interface</i>	50
<i>Televic CE2500 Protocol</i>	52



Serial Control Interface Introduction	49	Starting Net-Log-Win	19
Serial Port Connections	80	Start the Net-Log-Win Software	19
Serial Utility	14	Status Bar	25
Service Names-Options	59	Start the Net-Log-Win Software	19
Set-up & Installation	9	Status	74
Audio Input Levels	9	Status Bar	25
Connecting the Net-Log	11	Status Screen-Auto Archive	44
Connect the Unit to Your Network	17	Subnet Masks	12
Default Gateway	15		
Entering Network Settings	14	T	
Firmware Upgrades	15	Televic CE2500 Interface	50
Installing Net-Log-Win Software	13	Televic CE2500 Protocol	52
IP Addresses	11	Tools	73
Maximum Network Connections	10	Alarm Pin Connections	81
Network Topology	9	Audio Header Info	76
Play Streaming	10	Audio Inputs Pin Connections	82
Serial Utility	14	Connections	73
Subnet Masks	12	Deleting Cuts	73
Software bugs		DirectX	79
Reporting	viii	Network Pin Connections	82
Starting Net-Log-Software		Network Stats	75
Alarm Indicators	24	Serial Port Connections	80
Changing User Details	23	Status	74
Device List Editor	21	Track List Display	32
Disconnect/Log-Off Button	24		
First Time Use of Net-Log	23	U	
Licensing Your Net-Log	20	Updating Firmware	71
Login Procedure	21		
Maximum Concurrent Users	19	W	
Mentor Status	25	Warranty and Liability	v
Multiple Net-Logs On A Network	19	Wave Format	36
Net-Log & PC Time	25	WEEE & RoHS Directives - Sonifex Statement	x
Net-Log Selector	24		
Network Activity Indicators	4		



NOTES

SONIFEX

www.sonifex.co.uk

t:+44 (0)1933 650 700

f:+44 (0)1933 650 726

sales@sonifex.co.uk



interstage

Phistersvej 31, 2900 Hellerup, Danmark
Telefon 3946 0000, fax 3946 0040
www.interstage.dk

- pro audio with a smile



SONIFEX